

Flowfast Quartz Classic for wet areas (5 mm)



Description

Flowfast Quartz Classic is a hard wearing, decorative resin floor topping made up of colour stable quartz granules encapsulated in a clear acrylic resin binder.

Flowfast Quartz Classic has been developed to enable very fast track applications, typically 2 hours curing time to receive full traffic.

Flowfast Quartz Classic for wet areas is a hand trowelled system with a textured satin finish.

Uses

Ideal for use in kitchens and wet and dry process areas where the floor is subject to heavy traffic, impact and chemical spills. Also suitable for showers, changing rooms etc.

Benefits:

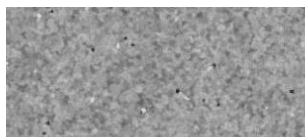
- Decorative floor finish
- Rapid installation
- High scratch resistance
- Slip resistant textured finish
- Excellent wear and impact resistance
- Seamless, hygienic finish
- Abrasion resistant
- High chemical resistance
- Enhanced resistance to UV light

Standard Colour Charts

Commercial range



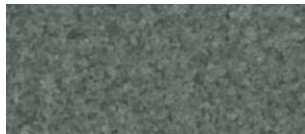
Biscuit 102



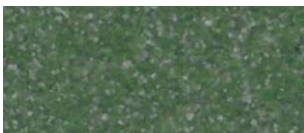
Light Grey 701



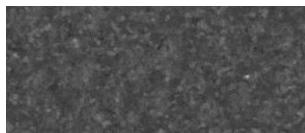
Beige 101



Mid Grey 702



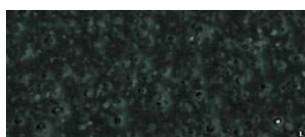
Grass Green 601



Dark Grey 703

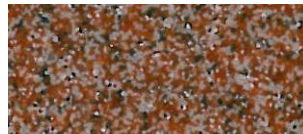


Mid Blue 501

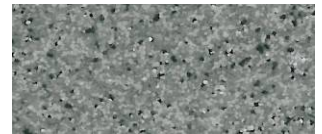


Black 901

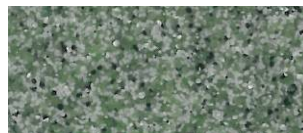
Industrial range



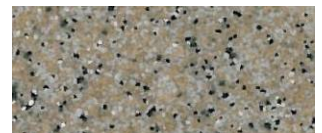
Red 301



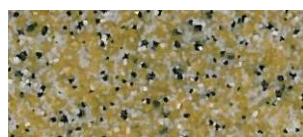
Grey 704



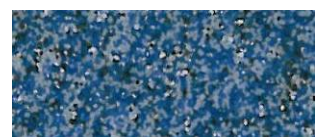
Green 602



Cream 103



Yellow 104



Blue 502

The applied colours may differ slightly from the examples shown above. Contact our customer services for a true colour sample or a special colour match. Special corporate colours and designs can be produced to order (restrictions apply).

Model Specification

Product: Flowfast Quartz Classic for wet areas

Finish: Satin

Thickness: _____ mm

Colour: _____

Preparatory work and application in accordance with suppliers instructions.

Supplier: Flowcrete UK Ltd

Telephone: Customer Service +44 (0) 1270 753000

Substrate Requirements

Concrete or screed substrate should be a minimum of 25N/mm², free from laitance, dust and other contamination. The substrate should be dry to 95% RH as per BS8204 and free from rising damp and ground water pressure.

Flowfast Damp Primer can be used for substrates up to 100% RH (surface dry).

Products Included in this System

Classic (for 5 mm)

Primer: Flowfast Primer @ 0.3-0.5 kg/m²

Scatter: Coloured Quartz size 7/8 @ 0.3 kg/m²

Topping: Mix 1 part weight Flowfast Binder to approx 3.3 parts of Coloured Quartz, size 7/8
Apply the topping @ 8 kg/m² (for 5mm)

Scatter: Coloured Quartz size 8 @ 2.0 kg/m²

Sealer: Flowfast Sealer @ 0.6 kg/m² (total for two coats)

Consult individual Product Data sheets for information on Flowfast Catalyst levels.

Detailed application instructions are available upon request.

Installation Service

The installation should be carried out by a Flowcrete approved contractor with a documented quality assurance scheme.

Obtain details of our approved contractors by contacting our customer service team or enquiring via our web site www.flowcrete.co.uk

Environmental considerations

The finished system is assessed as non-hazardous to health and the environment. The long service life and seamless surface reduce the need for repairs, maintenance and cleaning.

Environmental and health considerations are controlled during manufacture and application of the products by Flowcrete staff and fully trained and experienced contractors.

Note

No resin system is totally colour fast and may change colour over time (exhibits a yellowing effect). Colour change depends on the UV light and heat levels present and hence the rate of change cannot be predicted. This is more noticeable in very light colours but does not compromise the product's physical or chemical resistance characteristics. We have endeavoured to adopt colours within our standard range which minimise this change.

Intensively coloured products (e.g. hair colorants, medical disinfectants etc.) and plasticizer migration (e.g. from rubber tyres) can lead to irreversible discoloration in the sealer. Please contact our Technical Services Department for further advice.

Technical Information

The figures that follow are typical properties achieved in laboratory tests at 20°C and at 50% Relative Humidity. Tailored properties can be achieved with the selection of specific resins that are available on request.

Reaction to fire	B _{FL} - s1	EN 13501-1
Wear Resistance	Max wear depth <50µm	EN 13892-4
Bond Strength	> 2.5 N/mm ²	EN 13892-8
Impact Resistance	10 Nm	EN ISO 6272
Compressive Strength	60 N/mm ²	EN 13892-2
Flexural Strength	20 N/mm ²	EN 13892-2
Tensile Strength	15 N/mm ²	BS 6319-7
Temperature Resistance	Tolerant of sustained temperatures up to 70°C	
Water Permeability	Nil - Karsten test. (impermeable)	
Chemical Resistance (for specific chemicals please consult chemical resistance chart)	Good resistance to tea, coffee, cola, fruit juice, soaps and bleach	
Slip Resistance Method described in BS 7976-2 (typical values for 4-S rubber slider)	Dry >40 low slip potential Wet >40 low slip potential (in accordance with HSE and UKSRG guidelines)	

The slipperiness of flooring materials can change significantly, due to the installation process, after short periods of use, due to inappropriate maintenance, longer-term wear and/ or surface contaminants (wet or dry).

Textured systems are recommended to meet slip resistance value requirements for wet conditions and/ or surface contaminants (wet or dry) - please contact our Technical Advisors for further details and specifications.

Complies with BS 8204-6/FeRFA category 6.

Speed of Cure (per coat)

Walk on	1 hour
Full traffic & chemical cure	2 - 3 hours

Cure at temperatures in the range 0°C to +30°C can be achieved by altering the quantity of catalyst used. For applications below 0°C, please consult Technical Department.

Aftercare - Cleaning and Maintenance

Clean regularly using a single or double headed rotary scrubber drier in conjunction with a mildly alkaline detergent.

Important Notes

Flowcrete's products are guaranteed against defective materials and manufacture and are sold subject to its standard Terms and Conditions of Sale, copies of which can be obtained on request.

Any suggested practices or installation specifications for the composite floor or wall system (as opposed to individual product performance specifications) included in this communication (or any other) from Flowcrete UK Ltd constitute potential options only and do not constitute nor replace professional advice in such regard. Flowcrete UK Ltd recommends any customer seek independent advice from a qualified consultant prior to reaching any decision on design, installation or otherwise.