

► Hygienic, specialised flooring solutions for a range of internal and external areas within...

## HEALTHCARE FACILITIES

# Welcome to Flowcrete UK

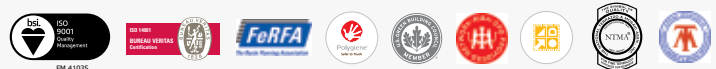
The construction and refurbishment of a range of healthcare facilities is steadily increasing in both public and private sectors, including new high-tech hospitals, aged care facilities and local medical centres.

Floor safety remains a key concern in the design of these facilities. Factors such as slip resistance requirements, lighting needs, levels of foot traffic and the frequency of cleaning regimes all affect the selection of a suitable safe flooring solution. Smooth, impervious, seamless applications are a common necessity for healthcare environments as these surfaces are easily cleanable and help healthcare facilities to maintain a high level of hygiene.

Flowcrete UK understands these requirements and has hygienic, specialised flooring solutions for a range of internal and external areas within hospitals, aged care or medical facilities.

## Product Selection Guide

	<i>FLOWCOAT SF41</i>	<i>FLOWSHIELD FX</i>	<i>FLOWFRESH MF</i>	<i>FLOWFRESH SR</i>	<i>FLOWFAST TERROSSO</i>	<i>FLOWFAST QUARTZ</i>	<i>MONDÉCO FLOORING*</i>	<i>COMFORT FLOORING*</i>	<i>DECKSHIELD ID</i>	<i>DECKSHIELD ED</i>	<i>NATUREWALK PAVE</i>
CONSULTATION ROOMS		•			•			•			
CLEAN ROOMS			•				•	•			
FOYERS		•			•		•				
CATERING KITCHENS				•		•					
SERVICE AREAS	•								•		
LAUNDRIES	•								•		
INTERNAL CORRIDORS		•			•			•			
EXTERNAL WALKWAYS					•	•				•	•
CAR PARKS									•	•	



PM 41035



ISO 22196



## Polygiene® Antimicrobial Effectiveness

Salmonella Typhi	✓
MRSA	✓
Enterococcus Faecalis	✓
E-coli	✓
Staphylococcus Aureus	✓
Listeria	✓
Streptococcus Pyogenes	✓
C.difficile	✓
Pseudomonas Aeruginosa	✓
Proteus Vulgaris	✓
Campila Bacta	✓

Polygiene® has been proven effective in both dry and wet zones, with some systems available with UV stable formulations.



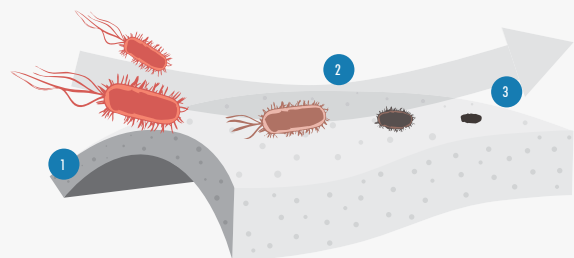
## HACCP International Certified Hygienic Flooring

A healthcare facility's floor is subject to heavy traffic and impact damage due to plant machinery in clean room environments and dropped equipment.

Resin flooring systems including epoxy, polyurethane MMA systems, ensure a non-porous, smooth and seamless surface where there is nowhere for bacteria or mould spores to grow.

Flowcrete UK's HACCP International and ISO 22196 certified polyurethane flooring materials offer enhanced protection with the inclusion of Polygiene®, a silver-ion antimicrobial agent, designed to protect the surface from degradation caused by microbial growth.

### How Does Polygiene® Work?



- 1 The silver ions are distributed throughout the floor.
- 2 The silver ions migrate to the surface.
- 3 They inhibit bacteria growth by penetrating the cell membrane.



## Performance Benefits

✓	Seamless and hygienic
✓	Fast curing
✓	Cost effective
✓	Easy to clean
✓	Resistant to chemicals and bodily fluids including blood
✓	Decorative

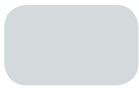
\* A detailed chemical resistance chart is available upon request for all Flowcrete systems. Please contact your local Technical Department for further assistance.

## Flowcoat SF41 (0.35 mm)

A high performance, solvent free epoxy resin coating that can deliver an anti-slip profile by inclusion of graded aggregate between coats. Flowcoat SF41 is also hard wearing against sustained forklift traffic, as well as chemical and abrasion resistant.

SERVICE AREAS, LAUNDRIES

### Standard Colours



Light Grey  
232



Beige  
326



Goosewing Grey  
222



Tile Red  
637



Mid Grey  
280



Forest Green  
754



Dark Grey  
281



Traffic Blue  
466



#### SLIP RESISTANCE

BS 7976-2 (typical values for 4-S rubber slider)	Dry > 40
--	----------

#### WEAR RESISTANCE

EN 13892-5	Abrasion quantity < 1 cm <sup>2</sup>
------------	---------------------------------------

#### IMPACT RESISTANCE

EN ISO 6272	10 N/m
-------------	--------



Flowcoat CR is available for additional chemical resistance. Please contact your local Flowcrete representative for further information. A full technical profile is available at [www.flowcrete.co.uk](http://www.flowcrete.co.uk)



## Flowshield FX (2–3 mm)

A solvent-free, self-smoothing, epoxy resin, combined with decorative coloured particles. This hard wearing system is available in a matt or silk finish and provides excellent abrasion, UV and chemical resistance.

CONSULTATION ROOMS, FOYERS, INTERNAL CORRIDORS

#### WEAR RESISTANCE

EN ISO 5470-1	< 3000mg
---------------	----------

#### SHORE D HARDNESS

DIN 53505	Approx. 90
-----------	------------

#### SLIP RESISTANCE

BS 7976-2	Dry > 40 Low slip potential
-----------	--------------------------------

### Standard Colours



White  
SF57



Signal Grey  
SF35



Pigeon Blue  
SF38



Moss Grey  
SF31



Black  
SF56



Grey Beige  
SF26



Dusty Grey  
SF34



Quartz Grey  
SF36



ISO 22196



## Flowfresh MF (4–6 mm)

A medium duty chemically resistant, antimicrobial treated polyurethane resin finish. The non-tainting, non-dusting surface provides an easy-to-clean surface with impressive durability under traffic and heavy machinery.

CLEAN ROOMS



### Standard Colours



#### TEMPERATURE RESISTANCE

Tolerant to intermittent spillages up to 70°C or sustained heat from -20°C to 60°C

#### COMPRESSIVE STRENGTH

EN 13892-2	55 N/mm <sup>2</sup>
------------	----------------------

#### IMPACT RESISTANCE

EN ISO 6272	15 Nm
-------------	-------

ISO 22196



## Flowfresh SR (5–6 mm)

A heavy duty, chemical resistant antimicrobial treated polyurethane resin floor screed system. Attractive positively textured coloured floor finish with anti slip properties. Ideal for wet processing zones such as food manufacturing and food preparation areas.

CATERING KITCHENS

#### TEMPERATURE RESISTANCE (6MM)

Tolerant to intermittent spillages up to 60°C or sustained heat from -20°C to 50°C

#### WATER PERMEABILITY

Karsten Test	Nil-Impermeable
--------------	-----------------

#### SLIP RESISTANCE

BS 7976-2	Dry > 40 low slip potential
-----------	-----------------------------

### Standard Colours



Applied colours may differ from the examples shown. For a full technical profile, colour chart and samples, contact your local Flowcrete office.





## Flowfast Terrosso (4 mm)

A seamless, decorative methyl methacrylate floor system with coloured flakes that delivers visual impact alongside high performance, under a quick turnaround. Curing in as little as one hour after application, Flowfast Terrosso has been developed to enable fast track installation.

- CONSULTATION ROOMS, FOYERS,  
INTERNAL CORRIDORS, EXTERNAL WALKWAYS

### Standard Colours



Cream  
111



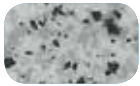
Beige  
112



Red  
311



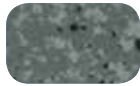
Blue  
511



Light Grey  
711



Signal Grey  
712



Mid Grey  
713



Dark Grey  
714



#### TEMPERATURE RESISTANCE

Tolerant of sustained temperatures up to 50°C

#### SLIP RESISTANCE

BS 7976-2

Dry > 40  
low slip potential

#### SPEED OF CURE

Walk on

1 hour

Full traffic & chemical cure

2-3 hours

1 Hour Cure!



## Flowfast Quartz (4 mm)

A hard wearing, decorative and very fast curing MMA flooring system that delivers a decorative matt finish. Flowfast Quartz consists of durable colour stable quartz granules encapsulated in a clear resin binder and delivers a fully trafficable surface just 60 minutes from application.

- CATERING KITCHENS, EXTERNAL WALKWAYS

### Standard Colours



Biscuit  
102



Light Grey  
701



Beige  
101



Mid Grey  
702



Grass Green  
601



Dark Grey  
703



Mid Blue  
501



Black  
901

#### SPEED OF CURE

Walk on

1 hour

Full traffic & chemical cure

2-3 hours

#### COMPRESSIVE STRENGTH

EN 13892-2

60 N/mm<sup>2</sup>

#### SLIP RESISTANCE

BS 7976-2

Dry > 40  
Low slip potential



Flowfast Quartz Structure/Wet areas also available.  
Please contact your local Flowcrete representative for further  
information. A full technical profile is available at [www.flowcrete.co.uk](http://www.flowcrete.co.uk)

Applied colours may differ from the examples shown. For a full technical profile, colour chart and samples, contact your local Flowcrete office.

# Mondéco Flooring

---

Flowcrete UK's seamless terrazzo flooring range, Mondéco, is the ultimate flooring choice for commercial environments owing to its eye-catching and durable finish.

This impressive flooring solution is the first-choice for architects, specifiers and flooring professionals across the globe. Offering a mix of aggregates ranging from sparkling crystal mirror glass right through to tough flint and granite chippings, the Mondéco range is the designer's dream for all interior flooring projects.

Perhaps the greatest benefit of terrazzo for architects and interior designers is how flexible the material can be in terms of its application. Mondéco can be installed in a variety of complicated patterns and precision cut forms using brass or aluminium trims, which are laid on the surface of the floor in a matrix that designates each area of the design.



Luxurious Aesthetic



Low Maintenance



High Strength



UV Resistant



Chemical Resistant



Wear Resistant

## Application Suitability

---



Clean Rooms



Foyers



# Comfort Flooring

Flowcrete's range of Comfort resin flooring provides the cushioned properties typically associated with vinyl but with the additional benefits of a seamless, hygienic and durable resin floor.

The seamless, impervious nature of these resin floors makes them easy to clean, which means that they are well-suited to environments with strict hygiene requirements. Flowcrete's floors are able to retain a crack-free finish for the long term, avoiding the need for frequent repairs or early refurbishments in order to provide a solution that is not just functional, but which is also economical.

Interior air quality is a key concern for the operators of large-scale commercial or public buildings. The Comfort Resins range meets the **M1 emission classification** for building materials, which is the lowest emission class there is. When compared with many alternative flooring materials, the Comfort Resins range more effectively limits the amount of volatile organic compounds (VOCs), as well as other toxins, that occur in the environment.



Aesthetic



Low Maintenance



Low Odour



UV Resistant



Hard Wearing



Noise Reduction

## Application Suitability



Consultation Rooms



Clean Rooms



Internal Corridors



## Deckshield ID (2–3 mm)

A low VOC, flexible, solvent free polyurethane car park deck coating system for intermediate decks of multi storey structures. Deckshield ID cosmetically enhances and reduces noise, making multi storey car parks brighter, safer environments to visit.

SERVICE AREAS, LAUNDRIES, CAR PARKS

### Standard Colours



Forest Green



Mid Grey



Dark Grey



Tile Red



Traffic Purple



Traffic Blue



### SLIP / SKID RESISTANCE

EN 13036-4

Class I: >40 units wet tested  
Class II: >40 units dry tested

### IMPACT RESISTANCE

EN ISO 6272-1

Class II:  $\geq 10$  Nm

### ABRASION RESISTANCE

EN ISO 5470-1

Weight loss < 3000mg  
using H22 wheel,  
1000 cycles, load 1000g



Deckshield Rapide ID is available for fast track applications. Please contact your local Flowcrete representative for further information. A full technical profile is available at [www.flowcrete.co.uk](http://www.flowcrete.co.uk)



## Deckshield ED (3–4 mm)

A low VOC, solvent free and crack-bridging car park deck coating system. Designed to provide a colourful, watertight and hard-wearing surface for exposed or roof level decks of multi-storey car parking structures.

EXTERNAL WALKWAYS, CAR PARKS

### Standard Colours



Forest Green



Mid Grey



Dark Grey



Tile Red



Traffic Purple



Traffic Blue

### REACTION TO FIRE

EN 13501-1

B<sub>fl</sub> - S1

### CRACK BRIDGING ABILITY

EN 1062-7  
Method A, Table 6

Class A5 (-20°C)

EN 1062-7  
Method B, Table 7

Class 4.2 (-20°C)

### ARTIFICIAL WEATHERING

EN 1062-11:2002

No blistering, no cracking  
and no flaking after 2000h  
of accelerated UV exposure.



Deckshield Rapide ED is available for fast track applications. Please contact your local Flowcrete representative for further information. A full technical profile is available at [www.flowcrete.co.uk](http://www.flowcrete.co.uk)

# Naturewalk Pave (12-18 mm)

A seamless and slip resistant resin bound gravel system used to hard landscape outdoor areas. Naturewalk Pave offers a seamless alternative to block paving, eliminates the cracks where weeds can grow and provides a durable replacement for loose stone or gravel.

EXTERNAL WALKWAYS

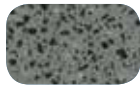
## Standard Colours



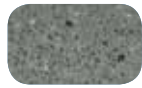
Silver Grey



Stone Grey



Black Ash



Ash Grey



Ash Stone



Rhinestone



### SLIP RESISTANCE

(EN 13036-4)

Class I: >40 units wet tested  
Class II: >40 units dry tested

### WATER PERMEABILITY

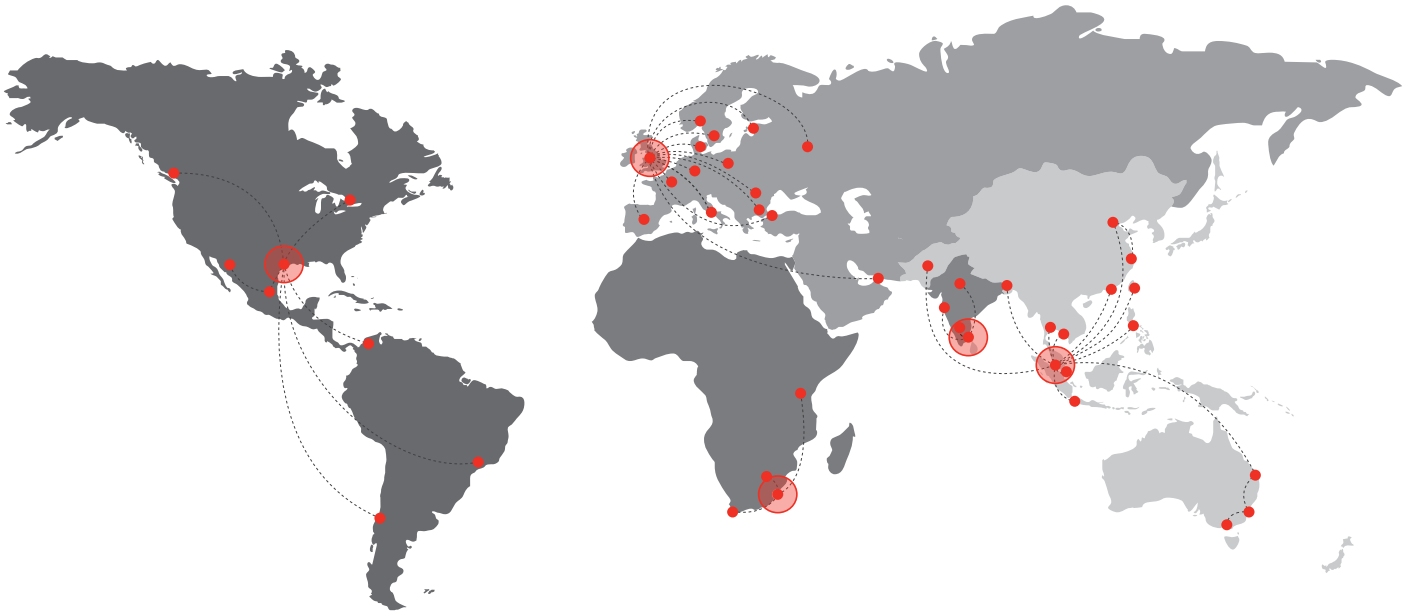
Karsten Test

Nil (Impermeable)

### ABRASION RESISTANCE

Dependant on aggregate selection. Use bauxite for heavier duty wear and vehicular traffic.





## Flowcrete

World leader in seamless resin flooring solutions and other specialist coatings.

### Europe & Middle East

Baltic States	+48 883 303 880	latvia@flowcrete.com
Bulgaria	+359 898 61 58 31	bulgaria@flowcrete.com
Denmark	+46 435 40 01 10	denmark@flowcrete.com
France	+33 1 60 61 74 42	france@flowcrete.com
Germany	+49 4187 50 29 470	germany@flowcrete.com
Italy	+39 339 4853258	italy@flowcrete.com
Norway	+47 6486 0830	norway@flowcrete.com
Poland	+48 22 879 8907	poland@flowcrete.com
Romania	+40 766 596 991	romania@flowcrete.com
Russia	+7 916 931 35 13	russia@flowcrete.com
Spain	+34 937 07 0872	spain@flowcrete.com
Sweden	+46 435 40 01 10	sweden@flowcrete.com
Turkey	+90 212 294 6567	turkey@flowcrete.com
UAE	+971 4 886 4728	uae@flowcrete.com
UK	+44 1270 753 000	uk@flowcrete.com

### Africa

East Africa	+254 20 682 1011	eastafrica@flowcrete.com
South Africa	+27 31 701 0017	southafrica@flowcrete.com

### India

India	+91 44 4017 6600	india@flowcrete.com
-------	------------------	---------------------

### Asia Pacific

Australia	+61 7 3205 7115	australia@flowcrete.com
Bangladesh	+88 02 985 7222	bangladesh@flowcrete.com
China	+86 10 8472 1912	china@flowcrete.com
Hong Kong	+852 2795 0478	hongkong@flowcrete.com
Indonesia	+62 21 252 3201	indonesia@flowcrete.com
Malaysia	+60 3 6277 9575	malaysia@flowcrete.com
Pakistan	+92 337 3159272	pakistan@flowcrete.com
Philippines	+63 2 834 6506	philippines@flowcrete.com
Singapore	+65 6848 7166	singapore@flowcrete.com
Taiwan	+886 916 954 291	taiwan@flowcrete.com
Thailand	+66 2539 3424	thailand@flowcrete.com
Vietnam	+84 28 6287 0846	vietnam@flowcrete.com

### Americas

Brazil	+55 11 3230 1107	brazil@flowcrete.com
Canada	+1 604 628 1782	canada@flowcrete.com
Chile	+56 2 2938 1962	chile@flowcrete.com
Colombia	+57 1 381 9254	colombia@flowcrete.com
Mexico	+01 800 099 0468	mexico@flowcrete.com
USA	+1 936 539 6700	usa@flowcrete.com

\*Whilst every care has been taken to ensure that the information included in this document was accurate at the time of printing, Flowcrete reserves the right to change product specifications at any time without prior notice. The photographs and colours reproduced in this publication are within the constraints of the printing process and are not to be used for matching purposes. All photographs are used for approximate representation only and may not show the actual products on offer. E&OE.