



**AIRPORT**

**FLOOR DESIGN**

### Innovative Flooring for the Full Airport Environment

Colourful car park deck coating,  
luxurious seamless terrazzo,  
sub-floor screeds and much more...



# WELCOME TO FLOWCRETE

Flowcrete Group is a global manufacturer of seamless resin floor and wall coatings, self-levelling and trowel-applied floor screeds, anti-corrosion coatings and linings as well as traffic deck coatings materials for multi-storey car parking facilities.

Flowcrete has a wealth of experience supplying decorative and durable flooring solutions to all areas contained within transport hubs and airports across the world.

With an experienced fleet of flooring professionals across the globe alongside the backing of a major US manufacturing group, Flowcrete offers those involved in airport design and refurbishment, floor solutions that significantly out-perform cheaper alternatives.



Parking Structures  
(External Decks)



Parking Structures  
(Intermediate Decks)



Aerospace & Hangar  
Environments



Front of House &  
Baggage Handling



Catering Kitchens &  
Food Service Areas



Plant Rooms &  
Maintenance Areas

# AIRPORT FLOOR DESIGN PORTFOLIO

Flowcrete has over 30 years of experience in the global resin flooring industry and has built up a significant project portfolio of airport and transport facilities across the globe.

Often acting as the gateway to and from the rest of the world, airports encompass a number of specialised zones from passenger terminals to car parks, railway platforms and retail concessions – all of which play a central role in supporting the operations of the airport itself.

Transforming airports into inspirational environments that deliver a memorable journey is an experience that may reach the skies, but begins and ends at floor level.



**WARSAW—MODLIN MAZOVIA AIRPORT**

**POLAND**

**LAX AIRPORT**

**USA**

**DUBAI INTERNATIONAL AIRPORT**

**UNITED ARAB EMIRATES**

**MANCHESTER INTERNATIONAL AIRPORT**

UNITED KINGDOM

**HEATHROW INTERNATIONAL AIRPORT**

LONDON, UNITED KINGDOM

**BANGKOK INTERNATIONAL AIRPORT**

THAILAND

**SYDNEY AIRPORT**

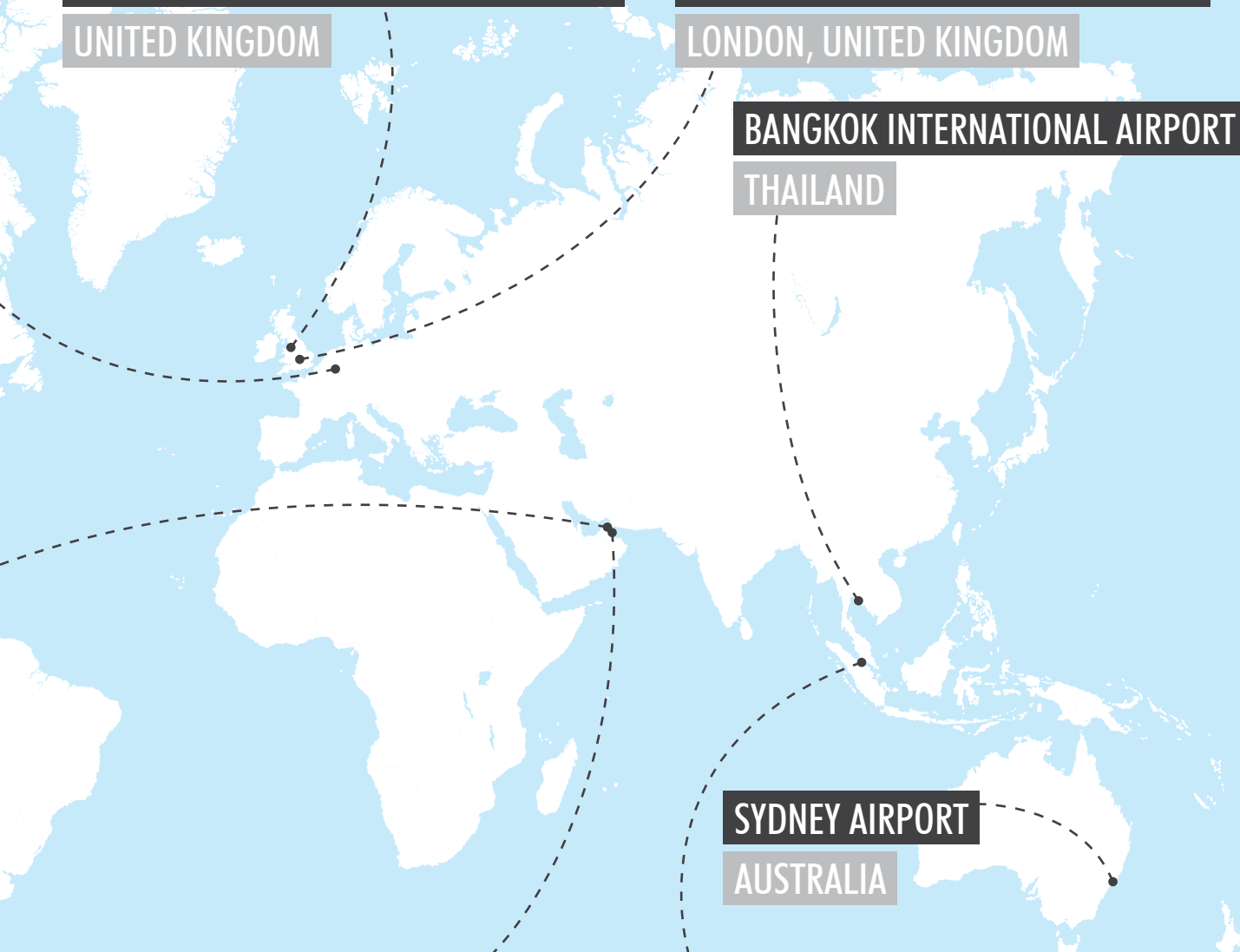
AUSTRALIA

**ABU DHABI INTERNATIONAL AIRPORT**

UNITED ARAB EMIRATES

**KUALA LUMPUR INTERNATIONAL AIRPORT**

MALAYSIA



# DUBAI INTERNATIONAL AIRPORT

## UNITED ARAB EMIRATES

Flowcrete has added to its portfolio of prestigious projects with a major installation at Dubai International Airport. A selection of Flowcrete's specialist systems including screeds, car park decking, hygienic and fast-track floors have helped the development take off in style.

Flowcrete's flexible waterproof Deckshield system was specified, with some 110,000 m<sup>2</sup> installed on all five levels of the car park, including the top deck. The fully trafficable polyurethane resin system will help protect the building structure from damage typically encountered by multi-storey structures where structural movement caused by constant traffic flow in and out can lead to eventual deterioration of the substrate and host concrete.

A further 260,000 m<sup>2</sup> of Deckshield was installed in other high traffic areas, including all service road ways underneath the Terminal Complex, the baggage handling areas and in all plant rooms.

The formulation used is fully UV resistant, with a profiled anti-skid surface helping to minimise tyre squeal and reduce noise pollution.

The entire multi-storey parking area was first installed with Isocrete K-Screed, a semi-dry cementitious screed. 40,000 m<sup>2</sup> of the same system was also installed beneath the external tiles at the passenger set down area in the Departures Hall.

For the kitchen facilities, Flowcrete provided its Flowfresh system meeting the criteria for durability and ease of cleaning. The seamless polyurethane floor incorporates Polygiene®, an antimicrobial agent which utilises the natural purification qualities of silver to deliver round the clock protection against a wide range of bacteria. A similar system known as Flowfast Quartz was also installed in the cold storage area.





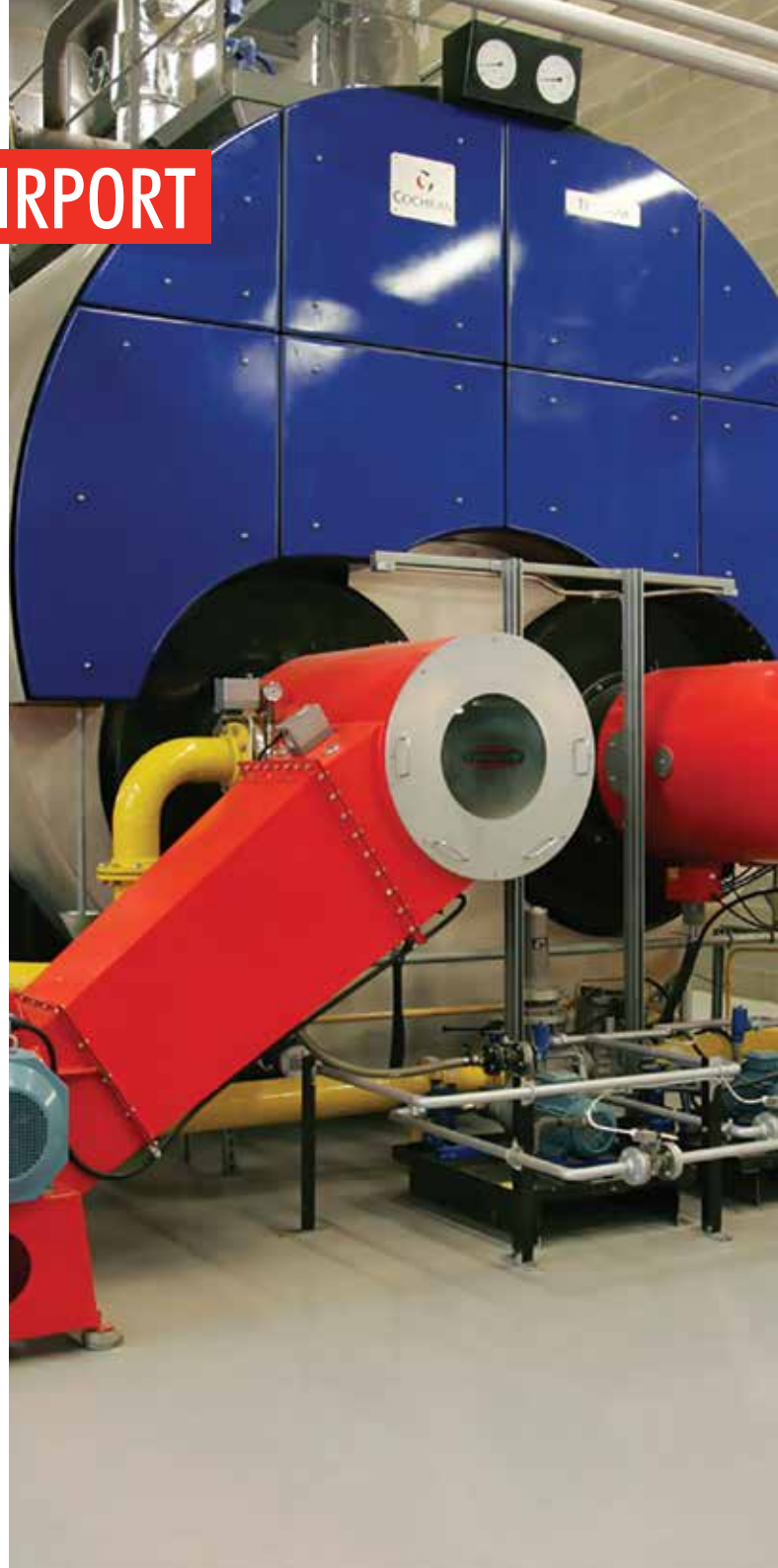
# LONDON HEATHROW AIRPORT

## UNITED KINGDOM

A Flowcrete floor finish has been installed behind the scenes in Terminal 5's energy centre at London Heathrow Airport, the area responsible for heating and cooling the GBP4.3 billion development.

The Terminal 5 energy centre opted for 2,500 m<sup>2</sup> of Flowcrete's heavy duty floor finishes, Flowscreed Industrial Top and Flowcoat SF41, to cope with the harsh conditions of supplying round-the-clock power to one of the world's busiest airport terminal buildings.

Flowcoat SF41 is ideal for use in back of house energy centres, pump and plant rooms on account of the product's hard-wearing properties in all circumstances combined with its seamless slip-resistant finish. Flowcrete provided the energy centre with a durable service which takes impact as well as foot and vehicular traffic in its stride, guaranteeing longevity and reliability.





# WARSAW—MODLIN MAZOVIA AIRPORT

## POLAND

Poland's recently developed Warsaw—Modlin Mazovia Airport has received 6,000 m<sup>2</sup> of Flowcrete's epoxy resin floor finish, Peran STB.

The airport is the capital city's second airport, and is anticipated to offer competitively priced flights and act as a cheaper alternative to the primary Warsaw airport.

The hard-wearing, trowel applied system, owing to its colour stable quartz granules, not only delivers a positively textured, slip resistant finish underfoot, but also offers durability to withstand the heavy traffic experienced in the arrivals and departures areas of the terminal building.

To ensure ease of navigation for the airport's anticipated 800,000 passengers, a topcoat of Flowcrete's Deckshield has been used to add demarcation, denoting arrivals and departures areas.



# HONG KONG INTERNATIONAL AIRPORT

## HONG KONG

First installed over 15 years ago, Flowcrete's Isocrete K-Screed, a proprietary semi-dry high strength screed, is still going strong at Hong Kong International Airport [HKIA] after millions of passengers have walked all over it.

Now the third busiest international passenger airport in the world, HKIA was built between 1992 and 1998 to an innovative design.

In the largest screed contract ever awarded at the time, a total of 250,000 m<sup>2</sup> of Isocrete K-Screed was applied.

Every day since, the system has stood up to continual high levels of foot and trolley-wheeled traffic in the main passenger terminal building, retail, food and entertainment areas, as well as associated maintenance areas and plant rooms.

Isocrete K-Screed, bonded with Polymer 70, was installed at a thickness of 100 mm throughout the high traffic site. The reduced water content of the K-Screed provides added strength and durability, eliminating the cracking, curling and debonding that often occurs with standard sand and cement screeds.

The superior impact resistance also protects thinner section floor finishes, such as vinyl, for far longer, significantly minimising the need for costly refurbishments down the line. K-Screed is suitable for use with a diverse range of final floor finishes including vinyl, carpet, marble, ceramics and various resin flooring finishes.

Subsequent phases of the project also included screeding at Cathay City, the headquarters and maintenance terminal for Cathay Pacific, where a number of areas were installed with K-Screed.





FLOORING  
TECHNOLOGIES  
AVAILABLE FROM  
FLOWCRETE

## MONDÉCO

Seamless resin terrazzo

## DECKSHIELD

Car park deck coatings

## FLOWFRESH

Antimicrobial flooring

## FLOWFAST

Fast cure flooring

## FLOWCRETE

Specialist resin floor finishes

## ISOCRETE

Sub-floor screeds

CONTACT  
THE FLOORING  
EXPERTS



[www.flowcrete.co.uk](http://www.flowcrete.co.uk)



[www.flowcrete.co.uk/our-news](http://www.flowcrete.co.uk/our-news)



[uk@flowcrete.com](mailto:uk@flowcrete.com)



"Flowcrete Group Ltd"



@FlowcreteUK



+44 (0) 1270 753 000



[www.allthingsflooring.com](http://www.allthingsflooring.com)



[youtube.com/flowcretetv](http://youtube.com/flowcretetv)



[slideshare.net/flowcrete](http://slideshare.net/flowcrete)

[www.flowcrete.co.uk/airports](http://www.flowcrete.co.uk/airports)