

## Deckshield Rapide ID (3–4 mm)

A fast cure methyl methacrylate deck coating system for use on intermediate car park decks.



### Independently Certified:

Tested & certified to OS8 and EN 1504-2.



### Resistant:

100% UV stable formulation available to prevent the floor from yellowing.



### Fast Track Installation:

Full traffic and chemical cure within 3 hours.



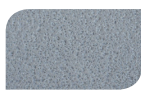
### Reduces Noise:

Enhanced traction underfoot minimises unpleasant noise from tyre squeal.



### Slip Resistant:

Positively textured anti-slip surface minimises slip and skid risks.



Mid Grey



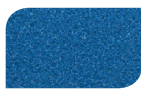
Dark Grey



Forest Green



Traffic Purple



Traffic Blue



Tile Red

The applied colours may differ from the examples shown.  
For a full colour chart and samples, contact your local Flowcrete office.

## Technical Profile

### EN 1504-2:2005 Part 2: Surface Protection Systems for Concrete

#### BOND STRENGTH

Measurement of Bond Strength by Pull-off

UNE-EN 1542:1999 > 1.5 MPa

#### WATER VAPOUR TRANSMISSION

Diffusion-equivalent Air Layer Thickness (Sd)

UNE-EN ISO 7783:2012 Class II:  $5 \leq Sd \leq 50$  m

#### LIQUID WATER PERMEABILITY

UNE-EN 1062-3:2008  $< 0.1 \text{ Kg/m}^2 \times \text{h}^{0.5}$

#### CARBON DIOXIDE PERMEABILITY

Diffusion-equivalent Air Layer Thickness (Sd)

UNE-EN ISO 7783:2012 > 50 m

#### ADHESION AFTER THERMAL COMPATIBILITY

With De-icing Salt Immersion & Thunder Shower Cycling

UNE-EN 13687-1&2:2002 > 1.5 MPa

#### ABRASION RESISTANCE

Taber

UNE-EN ISO 5470-1:1999 Weight loss < 3000 mg

#### SLIP RESISTANCE

UNE-EN 13036-4:2003 Class III: > 55 Wet Test

#### IMPACT RESISTANCE

UNE-EN ISO 6272-1:2012 Class III: > 20 Nm

#### DETERMINATION OF COMPRESSIVE STRENGTH

UNE-EN 12190:1999 Class II: > 50 N/mm<sup>2</sup>

#### RESISTANCE TO SEVERE CHEMICAL ATTACK

UNE-EN 13529:2005 Group 1, 3 & 10 No defects & reduction in Shore Hardness < 50%

#### DETERMINATION OF LINEAR SHRINKAGE

UNE-EN 12617-1:2004 < 0.3%

#### REACTION TO FIRE

EN 13501-1 C<sub>fi</sub>-s1

#### RESISTANCE TO CHLORIDE IONS

DOT BD47/94: Appendix B, Method B4,2(d) No chloride ion penetration after 28 days

#### SPEED OF CURE

Walk on 1 hour

Full Traffic & Chemical Cure 2–3 hours

Typical properties achieved in laboratory tests at 20°C and at 50% Relative Humidity for a model specification.

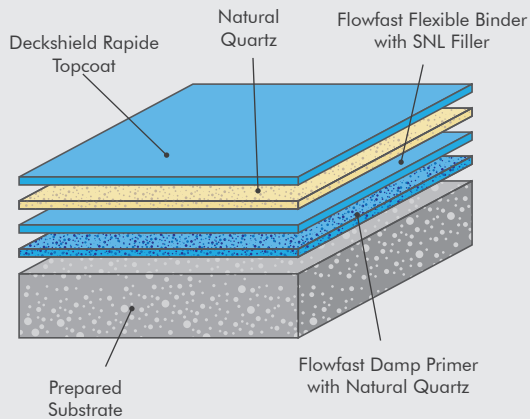
## Model Specification

System	Deckshield Rapide ID
Finish	Satin Matt

Preparatory work and application in accordance with manufacturer's instructions.

## Products Included In This System

<b>Deckshield Rapide ID for normal wear areas</b> (e.g. parking bays and lighter traffic).
<b>Deckshield Rapide ID-HD for heavier wear areas</b> (e.g. drive aisles, turning points and ramps).
<b>Deckshield Rapide ID-Ramp for very heavy wear areas</b> (e.g. sole entry/exit ramps and turning points).



## Substrate Requirements

Concrete or screed substrate should be a minimum of compressive strength of 25 N/mm<sup>2</sup> (and 1.5 N/mm<sup>2</sup> tensile strength tested by pull-off adhesion test on site). Substrate should be surface dry to 95% RH as per BS8203 and free from laitance, dust and other contamination. The system is designed to cope with construction moisture but is not designed to resist hydrostatic water pressure.

In such circumstances external tanking or pressure relief, by e.g. directed drainage, must be provided to the structure.

NB: Technical proposals are written for each installation to meet the client's particular requirements, the final thickness will be dependant upon the specification.

## Aftercare, Cleaning & Maintenance

Clean regularly using a single or double headed rotary scrubber drier in conjunction with a mildly alkaline detergent.

## Installation Service

The installation should be carried out by a Deckshield licensed contractor with a documented quality assurance scheme. Obtain details of our licensed contractors by contacting our customer service team or enquiring via our website [www.flowcrete.co.uk](http://www.flowcrete.co.uk)

## Environmental Considerations

The finished system is assessed as non-hazardous to health and the environment. The long service life and seamless surface reduce the need for repairs, maintenance and cleaning. Environmental and health considerations are controlled during manufacture and application of the products by Flowcrete staff and fully trained and experienced contractors.

Flowcrete's products are guaranteed against defective materials and manufacture and are sold subject to its standard Terms and Conditions of Sale, copies of which can be obtained on request. Any suggested practices or installation specifications for the composite floor or wall system (as opposed to individual product performance specifications) included in this communication (or any other) from Flowcrete UK Ltd constitute potential options only and do not constitute nor replace professional advice in such regard. Flowcrete UK Ltd recommends any customer seek independent advice from a qualified consultant prior to reaching any decision on design, installation or otherwise.

System Datasheet written for Flowcrete UK Ltd. Please consult Technical Team in your own country region for specific details. [09/05/19, 01 UK]