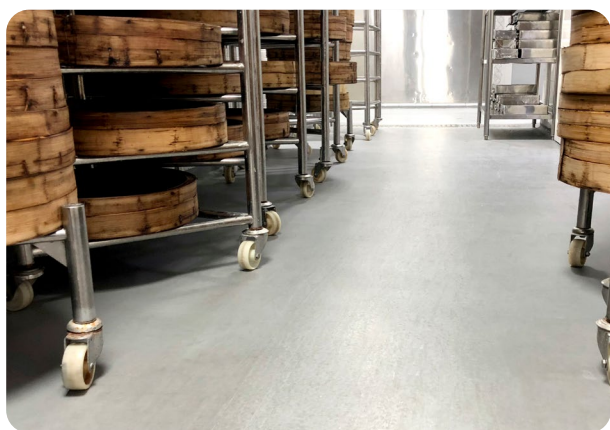


Flowfresh RT Quick

A trowel-applied, antimicrobial treated polyurethane resin floor screed.



Polygiene[®]:

Contains a silver ion antimicrobial additive proven to inhibit the growth of most types of harmful bacteria



Chemical Resistant:

Protects against food by-products, fats, hot oils, blood, sugar and acids



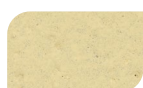
Slip Resistant:

Positively textured profile to minimise slip risks in wet or damp areas



Temperature Resistant:

Heat resistant to 120°C and resistant to steam cleaning



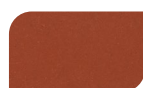
Cream



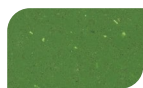
Ochre



Mustard



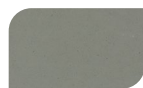
Red



Dark Green



Gentian Blue



Mid Grey



Dark Grey

†The applied colours may differ from the examples shown.
For a full colour chart and samples, contact Tremco CPG Poland.

Technical Information¹

FIRE RESISTANCE				
B _{fl} -s 1	EN 13501-1			
WEAR RESISTANCE				
AR0.5 (≤ 50 μm)	EN 13892-4			
BOND STRENGTH				
B2.0 (≥ 2.0 MPa)	EN 13892-8			
IMPACT RESISTANCE				
IR20 (20 Nm)	EN ISO 6272			
TEMPERATURE RESISTANCE				
Tolerant to intermittent spillages up to +120°C or sustained dry heat from -40°C to +105°C (at 9 mm thickness). Note: Assumes a good quality concrete substrate. At 6 mm the product is resistant to liquid discharge and spillages up to +70°C.				
COEFFICIENT OF THERMAL EXPANSION				
3.74 x 10 ⁻⁵ mm/mm°C	ASTM C531			
WATER PERMEABILITY				
Nil (impermeable)	Karsten Test			
VAPOUR PERMEABILITY				
3 g/m ² /24hrs (at 9mm thick)	ASTM E96:90			
SLIP RESISTANCE ²				
Wet > 40 low slip potential	EN 13036-4			
COMPRESSIVE STRENGTH				
> 50 N/mm ²	EN 13892-2			
FLEXURAL STRENGTH				
20 N/mm ²	EN 13892-2			
TENSILE STRENGTH				
10 N/mm ²	BS 6319-7			
SPEED OF CURE		+10°C	+15°C	+20°C
Light Traffic		15 hrs	10 hrs	5 hrs
Full traffic		30 hrs	20 hrs	12 hrs
Full chemical cure		7 days	6 days	5 days

¹The figures in the table beside are typical properties achieved in laboratory tests – these results may vary depending on the conditions on the installation site. ²The final anti-slip properties of the floor are influenced by the application method, the size and shape of the aggregate used for the topcoat (aggregate recommendations available from CPG Eastern Europe), the degree of abrasion, maintenance and the nature of the dirt.

Model Specification

Product	Flowfresh RT Quick
Finish	Matt
Thickness:	6–9mm
Colour	According to the catalog
Producer:	CPG Europe
Supplier:	Tremco CPG Poland Sp. z o.o.
Telephone:	+48 22 879 89 07

Installation Service

The installation should be carried out by a Flowcrete approved contractors with a documented quality assurance scheme. Obtain details of our approved contractors by contacting CPG Eastern Europe or enquiring via our website at www.flowcrete.com.pl.

Products Included in This System

Primer³:	Flowfresh SL Quick / Flowfresh Primer
Topping:	Flowfresh RT Quick

Note: The speed of cure for Flowfresh Primer cannot be improved like the Flowfresh Quick range.

³ If other resins are used contact CPG Eastern Europe for further details.

Detailed application instructions are available upon request.

Microbial / Fungal Resistance

The Polygiene® antimicrobial additive in the floor system provides control of most bacteria and fungi in contact with the floor.

Antimicrobial Active Substance	Silver biocide
Tested	ISO 22196 / JIS Z2801

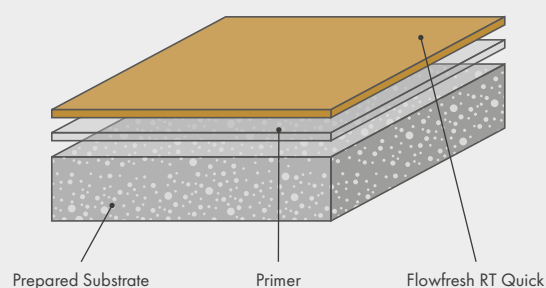
Aftercare, Cleaning & Maintenance

Clean regularly using a single or double headed rotary scrubber drier in conjunction with a mildly alkaline detergent.

Substrate Requirements

Concrete or screed substrate should be class min. C20/25, a minimum bond strength of 1.5 MPa (pull-off test), surface even, clean, free from laitance, dust and other contamination. All damages in the substrate should be repaired prior to applying the flooring. The substrate should be dry on surface and free from rising damp and ground water pressure. The humidity level of the substrate must not exceed 6% on Tramex scale to determine the level of moisture in the substrate to assess the right primer to use. For areas where continual heat resistance (above 50°C) is critical, epoxy primers cannot be used, the use Flowfresh Primer or Scratchcoat Flowfresh SL Quick is necessary. Details to be found in the "Concrete substrate requirements for Flowcrete floor systems" instructions and application system manual.

System Design



Environmental Considerations

The finished system is assessed as non-hazardous to health and the environment. The long service life and seamless surface reduce the need for repairs, maintenance and cleaning. Environmental and health considerations are controlled during manufacture and application of the products by CPG staff and fully trained and experienced contractors.

Notes

Flowfresh may change colour over time (exhibits a yellowing effect). Colour change depends on the UV light, heat levels present, chemical used, standards of maintenance employed and hence the rate of change cannot be predicted. This is an aesthetical matter but does not compromise the product parameters and properties. Intensively coloured products (e.g. hair colourants, medical disinfectants etc.) and plasticizer migration (e.g. from rubber tyres) can lead to irreversible discolouration in the surface. Avoid washing with water for the first 2-3 days following the floor application. Please contact Tremco CPG Poland for further advice.

Technical information, recommendations and instructions concerning the product use, storage and maintenance included in this System Data Sheet are based on Tremco CPG Poland Sp. z o.o. (further related as „CPG Polska”) knowledge and experience, reflecting the best acknowledged way of using the material for a given moment. Taking into consideration other factors that are beyond the producer’s control, including differences in quality of substrates, tools and other complementary materials, weather conditions, proper installation and also cleaning and maintenance, CPG Polska cannot take responsibility in case of failure to conform with information and instructions included in this System Data Sheet or, respectively, written recommendations from authorized CPG Polska representatives. One should always conform with up-to-date norms and building principles, and also safety, hygiene and health protection rules according to the information included in Material Safety Data Sheets and also on the products packaging. This System Data Sheet replaces all previous versions. In order to receive up-to-date System Data Sheets contact CPG Polska.

22/07/22

CPG Eastern Europe
ul. Marywilska 34, 03-228 Warsaw, Poland
tel.: +48 22 879 8907
email: poland@cpg-europe.com

 **Construction
Products Group**
Europe

www.flowcrete.com.pl