

Flowfresh ESD MF (4 mm)

An anti-static, chemical resistant antimicrobial treated polyurethane resin floor finish with a smooth matte coloured finish.



Anti-Static:

Meets the EN IEC 61340 for electrical resistance.



Polygiene®:

Contains a silver ion antimicrobial additive proven to inhibit the growth of most types of harmful bacteria.



Chemical Resistant:

Excellent resistance to sugars and most acids (organic and inorganic).



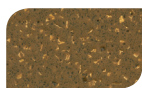
Low Odour:

Minimal odour during application and non-staining once cured.



Abrasion Resistant:

Very high abrasion resistance to protect against heavy duty processes.



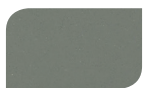
Mustard



Red

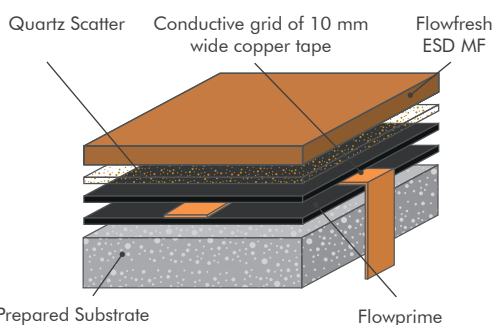


Dark Green



Mid Grey

The applied colours may differ from the examples shown. For a full colour chart and samples, contact your local Flowcrete office.



Technical Profile*

FIRE RESISTANCE			
EN 13501-1	B _{fl} -s1		
ELECTRICAL RESISTANCE			
EN IEC 61340-5-1	5x10 ⁴ – 1x10 ⁹ Ohms		
WEAR RESISTANCE			
EN 13892-5	Abrasion quantity < 1 cm ³		
BOND STRENGTH			
EN 13892-8	> 2.5 N/mm ²		
IMPACT RESISTANCE			
EN ISO 6272	15 Nm		
TEMPERATURE RESISTANCE			
Tolerant up to 70°C			
WATER PERMEABILITY			
Karsten Test	Nil (impermeable)		
VAPOUR PERMEABILITY			
ASTM E96:90	5 g / m ² / 24 hrs (at 4 mm thick)		
SLIP RESISTANCE*** (in accordance with HSE & UKSRG guidelines)			
BS 7976-2 (typical values for 4-S rubber slider)	Dry > 40 low slip potential		
COMPRESSIVE STRENGTH			
EN 13892-2	> 50 N/mm ²		
FLEXURAL STRENGTH			
EN 13892-2	20 N/mm ²		
TENSILE STRENGTH			
BS 6319-7	7 N/mm ²		
BS 8204-6 / FeRFA			
Type 7			
SPEED OF CURE**			
	10 °C	20 °C	30 °C
Light Traffic	36 hrs	24hrs	12 hrs
Full Traffic	72 hrs	48 hrs	24 hrs
Full Chemical Cure	10 days	7 days	5 days

*These figures are typical properties achieved in laboratory tests at 20°C and at 50% Relative Humidity.

***The slipperiness of flooring materials can change significantly, due to the installation process, after short periods of use, due to inappropriate maintenance, longer-term wear and/or surface contaminants (wet or dry). Textured systems are recommended to meet slip resistance value requirements for wet conditions and/or surface contaminants (wet or dry) - please contact our Technical Advisors for further details and specifications.

Model Specification

Product	Flowfresh ESD MF
Finish	Matte

Preparatory work and application in accordance with manufacturer's instructions.

Products Included in This System

Primer:	Flowprime @ 0.25 kg/m ²
Conductive Grid of 10 mm wide copper tape.	
Primer:	Flowprime @ 0.25 kg/m ²
Scatter:	Conductive Grade 30 @ approx. 2 kg/m ² <i>Test electrical resistance when primer cured.</i>
Topping:	Flowfresh ESD MF (Density 1.9 kg/l) @ 7.6 kg/m ² Flowfresh ESD MF is a self-sealing finish.

Detailed application instructions are available upon request.

Substrate Requirements

Concrete or screed substrate should be a minimum of 25 N/mm², free from laitance, dust and other contamination. The substrate should be dry to 75% RH as per BS8203 and free from rising damp and ground water pressure. If no damp proof membrane is present Hydraseal DPM can be incorporated directly beneath the Flowfresh ESD MF system.

Installation Service

The installation should be carried out by a Flowcrete approved contractor with a documented quality assurance scheme. Obtain details of our approved contractors by contacting our customer service team or enquiring via our website www.flowcrete.co.uk.

Notes

No resin system is totally colour fast and may change colour over time (exhibits a yellowing effect). Colour change depends on the UV light and heat levels present and hence the rate of change cannot be predicted. This is more noticeable in very light colours but does not compromise the product's physical or chemical resistance characteristics. Intensively coloured products (e.g. hair colourants, medical disinfectants etc.) and plasticizer migration (e.g. from rubber tyres) can lead to irreversible discolouration in the surface. Please contact our Technical Services Department for further advice.

Microbial / Fungal Resistance

The Polygiene® antimicrobial additive incorporated into Flowfresh ESD HF provides control of most bacteria and fungi which come into contact with the floor.

Antimicrobial Active Substance	Silver biocide
Tested	ISO 22196 / JIS Z2801

Environmental Considerations

The finished system is assessed as non-hazardous to health and the environment. The long service life and seamless surface reduce the need for repairs, maintenance and cleaning. Environmental and health considerations are controlled during manufacture and application of the products by Flowcrete staff and fully trained and experienced contractors.

Aftercare, Cleaning & Maintenance

Clean regularly using a single or double headed rotary scrubber drier in conjunction with a mildly alkaline detergent.

Flowcrete's products are guaranteed against defective materials and manufacture and are sold subject to its standard Terms and Conditions of Sale, copies of which can be obtained on request. Any suggested practices or installation specifications for the composite floor or wall system (as opposed to individual product performance specifications) included in this communication (or any other) from Flowcrete UK Ltd constitute potential options only and do not constitute nor replace professional advice in such regard. Flowcrete UK Ltd recommends any customer seek independent advice from a qualified consultant prior to reaching any decision on design, installation or otherwise.

System Datasheet written for Flowcrete UK Ltd. Please consult Technical Team in your own country region for specific details. [08/05/19, 01 UK]