

Deckshield Rapide ED3

6.5 mm (nominal)

A flexible, non-slip, rapid cure MMA top deck waterproofing system that offers superior elastomeric crack bridging properties.



EN 1504-2 Compliant:

Meets EU standards for the surface protections of concrete structures.



Rapid Cure:

Full traffic and chemical cure achieved within 3 hours of application.



Excellent Crack Bridging:

B4.2 (dynamic) at -20 degrees C. Safeguards against the movement and cracking of new-build parking structures.



Easier Application:

No fleece required. Reinforcement banding if required for additional localised crack bridging.

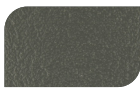


Above Occupied Premises:

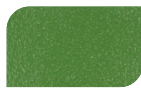
Can be installed in high-risk areas, such as decks above occupied premises.



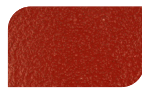
Dusty Grey
(near RAL 7037)



Traffic Grey
(near RAL 7043)



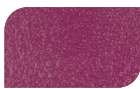
Grass Green
(near RAL 6010)



Tomato Red
(near RAL 3013)



Traffic Blue
(near RAL 5017)



Traffic Purple
(near RAL 4006)



Traffic Orange
(near RAL 2009)

The applied colours may differ from the examples shown. Some colours may incur a surcharge. For a full colour chart and samples, contact your local Flowcrete office.



Technical Profile

EN 1504-2:2005 Part 2: Surface Protection Systems for Concrete

CRACK BRIDGING PROPERTIES

EN 1062-7:2004 Method A – C.2 @ -20°C	Class A5 >2.5 mm Waterproofing layer
EN 1062-7:2004 Method A – C.2 @ -20°C	Class A3 >0.5 mm Wearing layer
EN 1062-7:2004 Method B – B.4.2 @ -20°C	No cracks

SLIP RESISTANCE

EN 13036-4:2011	Class III: >55 Wet Test
-----------------	-------------------------

REACTION TO FIRE

EN 13501-1	B ₁ -s1
------------	--------------------

BOND STRENGTH

Measurement of Bond Strength by Pull-off

EN 1542:1999	2.0 N/mm ²
--------------	-----------------------

WATER VAPOUR TRANSMISSION

Diffusion-equivalent Air Layer Thickness (Sd)

EN ISO 7783:2012	Class III: Sd >50 m
------------------	---------------------

LIQUID WATER PERMEABILITY

EN 1062-3:2008	0.0001 kg/m ² × h ^{0.5}
----------------	---

CARBON DIOXIDE PERMEABILITY

Diffusion-equivalent Air Layer Thickness (Sd)

EN 1062-6:2003	>50 m
----------------	-------

ADHESION AFTER THERMAL COMPATIBILITY

With De-icing Salt Immersion & Thunder Shower Cycling

EN 13687-1&2:2002	1.6 N/mm ²
-------------------	-----------------------

ABRASION RESISTANCE

Taber

EN ISO 5470-1:1999	Weight loss 604 mg
--------------------	--------------------

BEHAVIOUR AFTER ARTIFICIAL WEATHERING

EN 1062-11:2003 4.2 (2000 h)	No blistering, cracking or flaking
---------------------------------	------------------------------------

IMPACT RESISTANCE

EN ISO 6272-1:2012	Class III: 24.5 Nm
--------------------	--------------------

RESISTANCE TO SEVERE CHEMICAL ATTACK

EN 13529:2005 Group 1, 3 & 10	No defects & reduction in Shore Hardness >50%
----------------------------------	---

SPEED OF CURE

Walk on	1 hour
Full Traffic & Chemical Cure	2-3 hours

Typical properties achieved in laboratory tests at 20°C and at 50% Relative Humidity for a model specification.

Model Specification

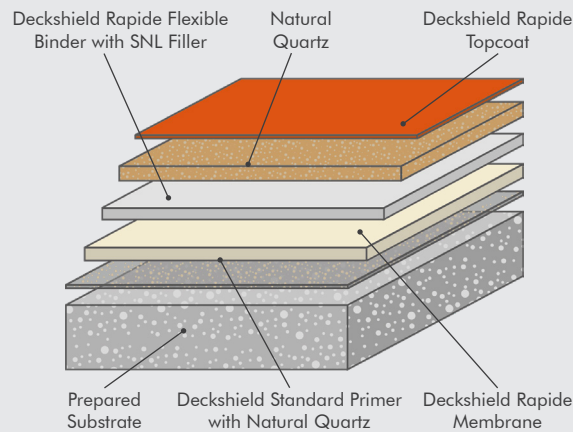
System	Deckshield Rapide ED3
Finish	Satin Matt

Preparatory work and application in accordance with manufacturer's instructions.

Products Included In This System

Deckshield Rapide ED3 6.5 mm (nominal) For normal wear areas (e.g. parking bays and lighter traffic).
Deckshield Rapide ED3-HD 7 mm (nominal) For heavier wear areas (e.g. drive aisles and turning points).
Deckshield Rapide ED-Ramp 7 mm (nominal) For very heavy wear areas (e.g. single entry/exit points and ramps).

System Build-Up



Substrate Requirements

Concrete or screed substrate should be a minimum of compressive strength of 25N/mm² (and 1.5 N/mm² tensile strength tested by pull-off adhesion test on site).

For the use of Deckshield Standard Primer, substrate should be surface dry to 92% RH. For Deckshield Damp Primer substrate

should be surface dry up to 97% RH, both as per BS8203 and free from laitance, dust and other contamination. The system is designed to cope with construction moisture but is not designed to resist hydrostatic water pressure.

In such circumstances external tanking or pressure relief, by e.g. directed drainage, must be provided to the structure.

NB: Technical proposals are written for each installation to meet the client's particular requirements, the final thickness will be dependant upon the specification.

Installation Service

The installation should be carried out by a Deckshield approved contractor with a documented quality assurance scheme. Obtain details of our approved contractors by contacting our customer service team or enquiring via our website www.flowcrete.co.uk

Aftercare, Cleaning & Maintenance

Clean regularly using a single or double headed rotary scrubber drier in conjunction with a mildly alkaline detergent.

Environmental Considerations

The finished system is assessed as non-hazardous to health and the environment. The long service life and seamless surface reduce the need for repairs, maintenance and cleaning. Environmental and health considerations are controlled during manufacture and application of the products by Flowcrete staff and fully trained and experienced contractors.

Flowcrete's products are guaranteed against defective materials and manufacture and are sold subject to its standard Terms and Conditions of Sale, copies of which can be obtained on request. Any suggested practices or installation specifications for the composite floor or wall system (as opposed to individual product performance specifications) included in this communication (or any other) from Flowcrete UK Ltd constitute potential options only and do not constitute nor replace professional advice in such regard. Flowcrete UK Ltd recommends any customer seek independent advice from a qualified consultant prior to reaching any decision on design, installation or otherwise.

System Datasheet written for Flowcrete UK Ltd. Please consult Technical Team in your own country region for specific details. [16/08/20, 02 UK]