

## FLOWFRESH

- ▶ HACCP International certified antimicrobial cementitious polyurethane floor coating systems, ideal for use in areas where hygiene is critical.

# Flowfresh Range Technical Profile



Flowfresh represents a new generation of high-performance antibacterial flooring. Created in partnership with Polygiene®, Flowfresh harnesses natural silver to inhibit the growth of most types of harmful bacteria.

Silver is a natural element known for its ability to purify and protect from bacterial infections – and provides an attractive, environmentally friendly alternative to chemically manufactured antimicrobials.

**HACCP International certified** as safe for use in food processing environments, Flowfresh offers total protection. A continuous migration of silver ions are delivered to the contact surface from where they attack gram positive and gram negative bacteria and viruses. This technology remains active for the lifetime of the floor, even when damaged or worn unlike coatings or surface treatments.

Flowfresh meets the **ISO 22196** standard of evaluating the antimicrobial activity of antimicrobial treated plastics and other non-porous surfaces.



## Application Suitability



Food & Beverage



Meat & Fish



Bakeries & Confectionery



Food Preparation & Kitchens



Hospitals & Healthcare



Pharmaceutical Environments

## Resistance Chart

BACTERIAL RESISTANCE			CHEMICAL RESISTANCE*				
MRSA	✓	Salmonella Typhi	✓	Hydrochloric Acid	✓	Methanol	✓
E-coli	✓	Enterococcus Faecalis	✓	Sulphuric Acid	✓	Sugar Syrups	✓
Listeria	✓	Staphylococcus Aureus	✓	Citric Acid	✓	Caustic Soda	✓
C.difficile	✓	Streptococcus Pyogenes	✓	Acetic Acid	✓	Petrol	✓
Proteus Vulgaris	✓	Pseudomonas Aeruginosa	✓	Lactic Acid	✓	Oil Ingredients	✓
		Campila Bacta	✓	Phosphoric Acid	✓	Detergents	✓

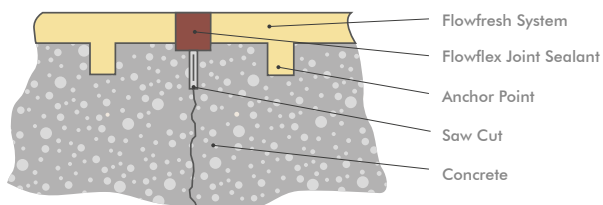
\*A chemical resistance chart is available on request.

# Complementary Products

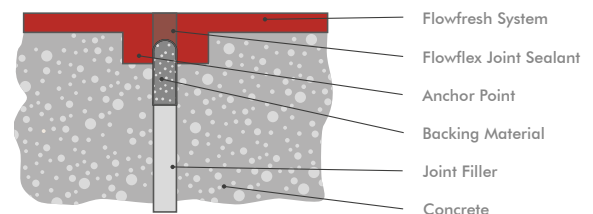
	DESCRIPTION	USES
<b>Isopol SBR</b>	A styrene butadiene (SBR) polymer latex screed additive and bonding agent.	Used to produce polymer modified wearing screeds for heavy duty applications.
<b>Flowprime</b>	A 2-component low viscosity epoxy resin primer for cementitious substrates.	Applied to screeds prior to overcoating with resin floor finishes.
<b>Flowfresh Primer</b>	3-component, polyurethane scratch coat/primer for concrete and cementitious substrates. Flowfresh Primer will bond to surface dry substrates that have a Relative Humidity up to 97% (to BS 8204).	For priming concrete and screeds, prior to overcoating with the Flowfresh flooring system.
<b>Peran TCW</b>	A thixotropic 2-component epoxy topcoat that produces a hard impermeable and repellent surface with good chemical resistance.	Applied to skirting and covers as a thixotropic seal coat.
<b>Hydraseal DPM</b>	A 2-component, solvent-free, epoxy resin prime for damp cementitious substrates with a Relative Humidity up to 100% (BS 8204).	Used as a primer for very damp substrates (with no visible surface moisture) where other primers are not suitable.
<b>Flowfresh HF Cove</b>	4-component, solvent-free, polyurethane concrete cove for the Flowfresh range of products containing antimicrobial additive, Polygiene®.	Used as footing/moulding compound to form coves for the Flowfresh SL, MF, RT and HF systems.
<b>Flowfresh Grout</b>	A 3-component, water based polyurethane grout with a coloured finish. Flowfresh grout will bond to surface dry substrates with a Relative Humidity of up to 97% (to BS 8204).	Flowfresh grout is applied to Mondéco TZ after the grinding process.
<b>Flowseal PU Satin</b>	A 2-component, water-based, aliphatic clear sealer with a satin finish.	Applied as a UV stable, abrasion resistant seal coat.
<b>Flowseal PU Matt Ultra</b>	As a protective coating for Flowcrete screeds, toppings and third party resilient floorings.	Applied as a UV stable, abrasion resistant seal coat.

## Joint Details

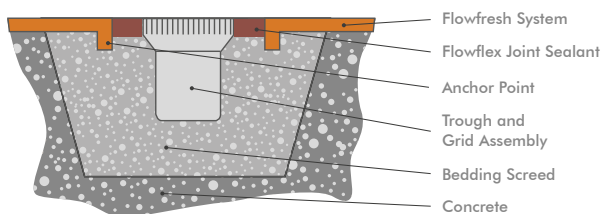
Typical (induced) Movement Joint



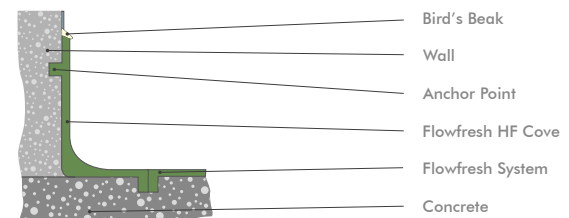
Typical (expansion) Movement Joint



Typical Drainage Chancel Arrangement



Typical Floor to Wall Detail



# Flowfresh SL & MF (2, 4–6 mm)

Smooth, matt polyurethane screeds for use in dry areas subject to light-medium traffic.

Best suited to packaging areas and processing zones subject to light-medium foot and wheeled traffic, these trowel applied systems deliver a seamless joint-free finish.



### Chemical Resistant:

Protects against the majority of acids used in manufacturing processes.



### Abrasion Resistant:

Holds its own against impact, traffic and chemical attack.



### Hygienic:

Contains Polygiene® - an antimicrobial additive that inhibits the growth of most types of harmful bacteria.



### Easy to Clean:

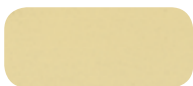
Minimal joints makes this flooring easy to sterilise.



### Low Odour:

Improved air quality during installation and beyond.

## Colours



Cream



Ochre



Red



Mustard



Mid Grey



Dark Green



Dark Blue



Dark Grey

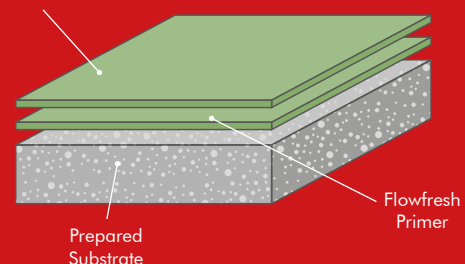
The applied colours may differ from the examples shown. For a full colour chart and samples, contact your local Flowcrete office.

## Technical Profile

TEMPERATURE RESISTANCE	
SL (2mm)	MF (4–6mm)
-20°C to 50°C (sustained dry heat) Up to 60°C (intermittent spillages)	-20°C to 60°C (sustained dry heat) Up to 70°C (intermittent spillages)
WATER PERMEABILITY	
Karsten Test	Nil-Impermeable
FIRE RESISTANCE	
EN 13501-1	B <sub>fl</sub> -s1
SLIP RESISTANCE	
BS 7976-2 (typical values for 4-S rubber slider)	Dry >40 low slip potential
COMPRESSIVE STRENGTH (EN 13892-2)	
SL	MF
>50 N/mm <sup>2</sup>	55 N/mm <sup>2</sup>
FLEXURAL STRENGTH (EN 13892-2)	
SL	MF
20 N/mm <sup>2</sup>	20 N/mm <sup>2</sup>
TENSILE STRENGTH (BS 6319-7)	
SL	MF
10 N/mm <sup>2</sup>	7 N/mm <sup>2</sup>
BOND STRENGTH	
EN 13892-8	>2.5 N/mm <sup>2</sup>

SPEED OF CURE**	10°C	20°C	30°C
Light Traffic	36 hrs	24 hrs	12 hrs
Full Traffic	72 hrs	48 hrs	24 hrs
Full Chemical Cure	10 days	7 days	5 days

Flowfresh SL / MF



\*\* Assumes concrete compressive strength is greater than 25N/mm<sup>2</sup>

\*\* Cure times at temperatures between 0-30°C can be achieved by altering the quantity of catalyst used. For applications falling outside of this temperature range, please contact your local Flowcrete Technical Department.



## Application Suitability

Light - Medium Traffic 2 mm	✓
Medium - Heavy Traffic 4-6 mm	✓
Industrial Kitchens / Semi Dry Areas	✓
Packaging Areas	✓
Loading Bays	✓
Laboratories / Quality Control	✓
Dispensaries	✓
Cold Stores / Freezers	



## Application Suitability

Dry Process (Med/Heavy Traffic)	✓
Wet Process (Med/Heavy Traffic)	✓
Industrial Kitchens / Wash Areas	✓
Packaging Areas	
Chemical / Solvent Stores	✓
Loading Bays	✓
Laboratories / Quality Control	
Dispensaries	
Cold Stores / Freezers	✓



# Flowfresh HF & RT (6-9 mm)

Slip-resistant polyurethane screeds for use in wet areas subject to high volumes of traffic.

Best suited to wet processing zones subject to high volumes of foot and wheeled traffic, these trowel applied 6-9mm systems deliver a seamless joint-free matt finish.



### Heat Resistant:

Resistant to temperatures of up to 120°C.



### Slip Resistant:

Impressive anti-slip profile in dry and wet conditions.



### Hygienic:

Contains Polygiene® - an antimicrobial additive that inhibits the growth of most types of harmful bacteria.



### Chemical Resistant:

Protects against the majority of acids used in manufacturing processes.



### Abrasion Resistant:

Holds its own against impact, traffic and chemical attack.

## Colours



Cream



Ochre



Red



Mustard



Mid Grey



Dark Green



Dark Grey



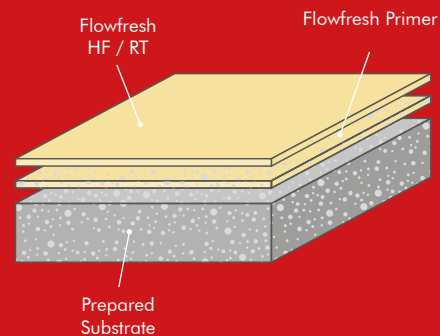
Dark Blue

The applied colours may differ from the examples shown. For a full colour chart and samples, contact your local Flowcrete office.

## Technical Profile

TEMPERATURE RESISTANCE	
HF (at 9mm)	RT (at 9mm)
-40°C to 105°C (sustained dry heat) Up to 120°C (intermittent spillages)	-40°C to 105°C (sustained dry heat) Up to 120°C (intermittent spillages)
WATER PERMEABILITY	
Karsten Test	Nil-Impermeable
FIRE RESISTANCE	
EN 13501-1	B <sub>fl</sub> -s1
SLIP RESISTANCE	
BS 7976-2	Dry >40 low slip potential
COMPRESSIVE STRENGTH	
BS6319	>50 N/mm <sup>2</sup>
FLEXURAL STRENGTH	
EN 13892-2	20 N/mm <sup>2</sup>
TENSILE STRENGTH	
BS 6319-7	10 N/mm <sup>2</sup>
BOND STRENGTH	
EN 13892-8	>2.5 N/mm <sup>2</sup>

SPEED OF CURE**	10°C	20°C	30°C
Light Traffic	36 hrs	24 hrs	12 hrs
Full Traffic	72 hrs	48 hrs	24 hrs
Full Chemical Cure	10 days	7 days	5 days



\*Assumes concrete compressive strength is greater than 25N/mm<sup>2</sup>



Flowfresh HF LT is available with improved fluidity at low temperatures (<15°C)

\*\* Cure times at temperatures between 0-30°C can be achieved by altering the quantity of catalyst used. For applications falling outside of this temperature range, please contact your local Flowcrete Technical Department.

## Colours



Cream



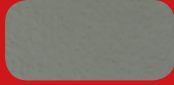
Ochre



Red



Mustard



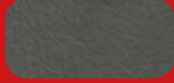
Mid Grey



Dark Green



Dark Blue



Dark Grey



## Technical Profile

### TEMPERATURE RESISTANCE (8 mm)

Up to 90°C (intermittent spillages)  
-20°C to 50°C (sustained heat)

### WATER PERMEABILITY

Karsten Test

Nil-Impermeable

### SLIP RESISTANCE

BS 7976-2

Dry >40 low slip potential

### COMPRESSIVE STRENGTH

EN 13892-2

>50 N/mm<sup>2</sup>

### FLEXURAL STRENGTH

EN 13892-2

20 N/mm<sup>2</sup>

### TENSILE STRENGTH

BS 6319-7

7 N/mm<sup>2</sup>

### BOND STRENGTH

EN 13892-8

>2.5 N/mm<sup>2</sup>

## Flowfresh SR (4–10 mm)

A HACCP International certified, slurry-broadcast, antimicrobial treated polyurethane resin floor screed system.

Suited to all zones subject to heavy foot and wheeled traffic, such as wet processing areas or food preparation zones, this trowel applied 5mm to 6mm system delivers an anti-slip floor finish.



Slip resistant for safety underfoot



Hygienic antimicrobial additive



Heat resistant up to 90°C



Resistant to oils, sugar and chemicals



# Flowfresh SRQ (5-6 mm)

A heavy duty decorative screed with a coloured quartz aggregate that provides anti-slip properties.

Suited to all zones subject to heavy foot and wheeled traffic, such as wet processing areas or food preparation zones, this trowel applied system delivers a decorative joint-free floor finish.



### Decorative:

Offers an attractive finish to enhance the working environment.



### Slip Resistant:

Impressive anti-slip profile in dry and wet conditions.



### Easy to clean:

The joint-free floor finish is hygienic and low maintenance.



### Chemical Resistant:

Protects against the majority of acids used in manufacturing processes.



### Hygienic:

Contains Polygiene® - an antimicrobial additive that inhibits the growth of most types of harmful bacteria.

## Colours



Blue 501



Cream 103



Green 602



Grey 704



Red 301



Yellow 104

The applied colours may differ from the examples shown. For a full colour chart and samples, contact your local Flowcrete office.

## Technical Profile

### TEMPERATURE RESISTANCE

Up to 60°C (intermittent spillages)  
-20°C to 50°C (sustained heat)

### FIRE RESISTANCE

EN 13501-1 B<sub>fl</sub>-s1

### WATER PERMEABILITY

Karsten Test Nil-Impermeable

### VAPOUR PERMEABILITY

ASTM E96:90 5 g/m<sup>2</sup>/24hrs (at 4mm thick)

### SLIP RESISTANCE

BS 7976-2 Dry >40 low slip potential

### COMPRESSIVE STRENGTH

EN 13892-2 >50 N/mm<sup>2</sup>

### FLEXURAL STRENGTH

EN 13892-2 20 N/mm<sup>2</sup>

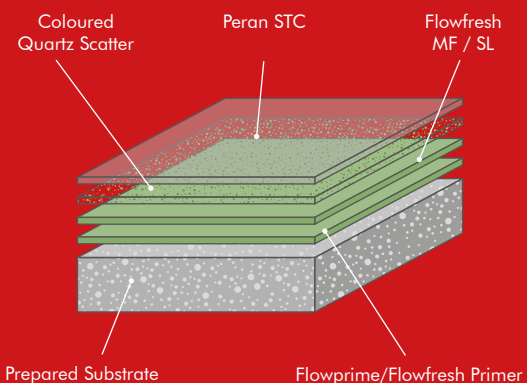
### TENSILE STRENGTH

BS 6319-7 10 N/mm<sup>2</sup>

### BOND STRENGTH

EN 13892-8 >2.5 N/mm<sup>2</sup>

SPEED OF CURE**	10°C	20°C	30°C
Light Traffic	36 hrs	24 hrs	12 hrs
Full Traffic	72 hrs	48 hrs	24 hrs
Full Chemical Cure	10 days	7 days	5 days



\*\* Assumes concrete compressive strength is greater than 25N/mm<sup>2</sup>

\*\* Cure times at temperatures between 0-30°C can be achieved by altering the quantity of catalyst used. For applications falling outside of this temperature range, please contact your local Flowcrete Technical Department.

## Application Suitability

Dry Process (Med/Heavy Traffic)	
Wet Process (Med/Heavy Traffic)	
Industrial Kitchens / Wash Areas	
Packaging Areas	✓
Chemical / Solvent Stores	
Loading Bays	
Laboratories / Quality Control	✓
Dispensaries	✓
Cold Stores / Freezers	



# Mondéco TZ (7 mm)

A high temperature resistant, steam cleanable polyurethane terrazzo finish, ideal for floors subject to hot fluid spillages.

Suited for pharmaceutical, food and chemical process areas where floors are subject to steam cleaning, heavy traffic and chemical attack.



### Durable:

The durable properties of this range ensure a longer floor life span.



### Hygienic:

Contains Polygiene® - an antimicrobial additive that inhibits the growth of most types of harmful bacteria.



### Decorative:

Offers an attractive finish to enhance the working environment.



### Heat Resistant:

Resistant to temperatures of up to 120°C.



### Chemical Resistant:

Protects against the majority of acids used in manufacturing processes.



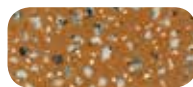
### Slip Resistant:

Impressive anti-slip profile in dry and wet conditions.

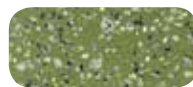
## Colours



Cream



Mustard



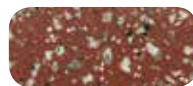
Dark Green



Ochre



Mid Grey



Tile Red

The applied colours may differ from the examples shown. For a full colour chart and samples, contact your local Flowcrete office.

## Technical Profile

### TEMPERATURE RESISTANCE

From -40°C to 105°C (sustained dry heat)  
Up to 120°C (intermittent spills)

### WATER PERMEABILITY

Karsten Test Nil-Impermeable

### FIRE RESISTANCE

EN 13501-1 B<sub>fl</sub>-s1

### SLIP RESISTANCE

BS 7976-2 Dry >40 low slip potential

### COMPRESSIVE STRENGTH

EN 13892-2 >55 N/mm<sup>2</sup>

### BOND STRENGTH

EN 13892-8 >2.0 N/mm<sup>2</sup>

### WEAR RESISTANCE

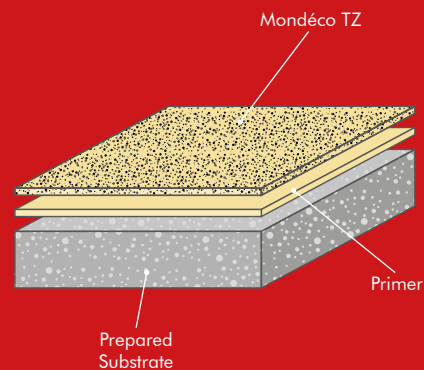
EN 13892-4 Max. wear depth <50 µm

### VAPOUR PERMEABILITY

2 g / m<sup>2</sup> / 8mm / 24 hr

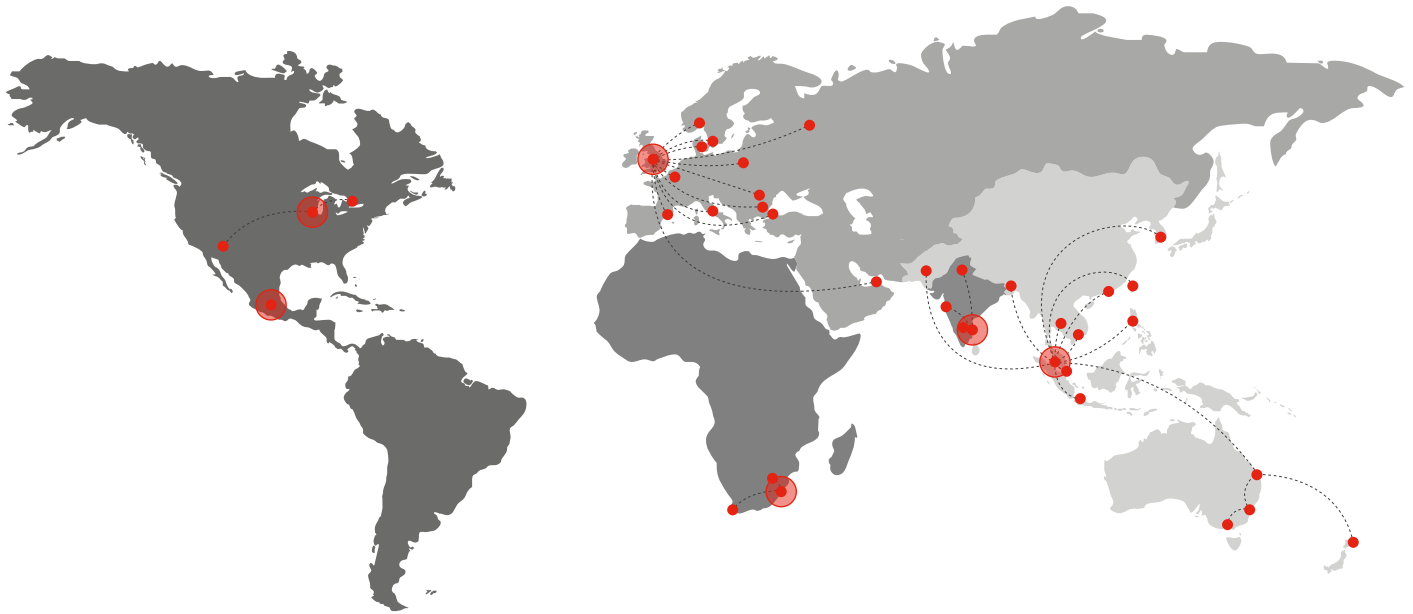
### SPEED OF CURE\*\*

	10°C	20°C	30°C
Light Traffic	24 hrs	16 hrs	10 hrs
Full Traffic	72 hrs	48 hrs	36 hrs
Full Chemical Cure	12 days	7 days	7 days



\*\* Assumes concrete compressive strength is greater than 25N/mm<sup>2</sup>

Cure times at temperatures between 0-30°C can be achieved by altering the quantity of catalyst used. For applications falling outside of this temperature range, please contact your local Flowcrete Technical Department.



## Flowcrete

World leader in seamless resin flooring solutions and other specialist coatings.

### Africa

South Africa +27 31 701 0017 southafrica@flowcrete.com

### Asia Pacific (APAC)

Australia	+61 7 3205 7115	australia@flowcrete.com
Bangladesh	+603 6277 9575	bangladesh@flowcrete.com
Hong Kong	+852 2795 0478	hongkong@flowcrete.com
Indonesia	+62 21 252 3201	indonesia@flowcrete.com
Korea	+60 3 6277 9575	korea@flowcrete.com
Malaysia	+60 3 6277 9575	asia@flowcrete.com
New Zealand	+64 7 541 1221	newzealand@flowcrete.com
Pakistan	+60 3 6277 9575	pakistan@flowcrete.com
Philippines	+63 2 834 6506	philippines@flowcrete.com
Singapore	+65 6848 7166	singapore@flowcrete.com
Taiwan	+60 3 6277 9575	taiwan@flowcrete.com
Thailand	+66 2539 3424	thailand@flowcrete.com
Vietnam	+84 28 6287 0846	vietnam@flowcrete.com

## Europe & Middle East (EME)

Bulgaria	+359 898 61 58 31	bulgaria@flowcrete.com
Denmark	+46 435 40 01 10	denmark@flowcrete.com
France	+33 1 60 61 74 42	france@flowcrete.com
Italy	+39 339 4853258	italy@flowcrete.com
Norway	+47 6486 0830	norway@flowcrete.com
Poland	+48 22 879 8907	poland@flowcrete.com
Romania	+40 766 596 991	romania@flowcrete.com
Russia	+7 916 931 3513	russia@flowcrete.com
Spain	+34 937 07 0872	spain@flowcrete.com
Sweden	+46 435 40 01 10	sweden@flowcrete.com
Turkey	+90 212 2946570	turkey@flowcrete.com
UAE	+971 4 347 0460	uae@flowcrete.com
UK	+44 (0) 1942 251 400	flooringuk@cpg-europe.com

### India

India +91 44 40176600 india@flowcrete.com

## North America

Canada	+1 877-210-2444	canada@flowcrete.com
Mexico	+55 44 40 94 00	mexico@flowcrete.com
USA	+1 513-943-4225	americas@flowcrete.com

\*Whilst every care has been taken to ensure that the information included in this document was accurate at the time of printing, Flowcrete reserves the right to change product specifications at any time without prior notice. The photographs and colours reproduced in this publication are within the constraints of the printing process and are not to be used for matching purposes. All photographs are used for approximate representation only and may not show the actual products on offer. E&OE.