

► A complete package of specialist resin coating systems for all areas of...

## FRUIT & VEGETABLE PROCESSING

# Welcome to Flowcrete UK

After harvest, the task of preparing crops for market gets underway. This involves quality control, sorting, grading and packaging all produce ready for both distribution and export.

Packhouse environments, like other food and beverage processing facilities, must deliver a hygienic and sanitary space within which to clean and pack consumable foodstuffs as well as ensure a safe working environment for employees free from skid and slip risks.

Left uncoated and when combined with heavy foot and rubber-wheeled vehicular traffic, concrete floors can wreak havoc, leading to the build up of mould and bacteria in joints and cracks as well as delivering an unfavourable environmental air quality, which in itself can result in the rapid deterioration of fresh produce and other consumable food stuffs.

Flowcrete UK offers a complete package of specialist resin coating systems for all areas of the packhouse designed to improve aesthetics, increase hygiene and reduce slip risks.

## Fruit & Vegetable Processing Facilities Floor Plan



### Wet Processing Areas

Flowfresh HF  
Flowfresh HF LT



### Foyers

Mondéco Classic  
Mondéco Mirrazzo



### Internal Walkways

Deckshield ID  
Deckshield Rapide ID



### Warehouses

Flowcoat SF41



### Dry Processing Areas

Flowfresh SR  
Flowfresh MF



### Corridors

Flowfresh MF



### Restrooms

Flowfast Quartz &  
Classic for wet areas



### External Walkways

Deckshield ED  
Deckshield Rapide ED



## Polygiene® Antimicrobial Effectiveness



Salmonella Typhi	✓
MRSA	✓
Enterococcus Faecalis	✓
E-coli	✓
Staphylococcus Aureus	✓
Listeria	✓
Streptococcus Pyogenes	✓
C.difficile	✓
Pseudomonas Aeruginosa	✓
Proteus Vulgaris	✓
Campila Bacta	✓



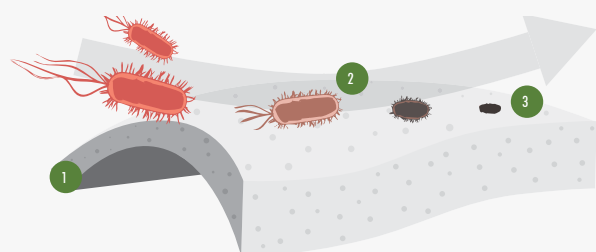
## HACCP International Certified Hygienic Flooring

Hygienic, easily cleaned and slip-resistant flooring is a crucial aspect of any fruit and vegetable plant operating a food safety management system based on hazard prevention.

Resin flooring systems ensure a non-porous, smooth and seamless surface where there is nowhere for bacteria or mould spores to grow.

Flowcrete UK's HACCP International certified and ISO 22196 compliant cementitious urethane flooring materials offer enhanced protection with the inclusion of Polygiene®, a silver-ion antimicrobial agent, designed to protect the surface from degradation caused by microbial growth.

### How Does Polygiene® Work?



- 1 The silver ions are homogeneously distributed throughout the floor.
- 2 The silver ions migrate to the surface.
- 3 They protect the surface from degradation caused by microbial growth.





## Flowfresh HF (6–9 mm)

A trowel applied, heavy-duty and wear resistant antimicrobial treated polyurethane resin floor screed. Flowfresh HF provides a durable, anti-slip finish, which is resistant to thermal shock, steam cleaning and moisture vapour transmission.

✓ WET PROCESSING AREAS

### Standard Colours



Cream



Ochre



Red



Mustard



Dark Green



Mid Grey



Dark Grey



Dark Blue

#### TEMPERATURE RESISTANCE:

Tolerant to intermittent spillages up to 120°C or sustained dry heat from -40°C to 105°C (at 9mm thickness).

#### COEFFICIENT OF THERMAL EXPANSION:

ASTM C531

$3.74 \times 10^{-5}$  mm/mm°C.

#### SLIP RESISTANCE:

BS 7976-2

Dry > 40  
Low slip potential.



\*Flowfresh HF LT is available for low temperature applications. Please contact your local Flowcrete representative for further information. A full technical profile is available at [www.flowcrete.co.uk](http://www.flowcrete.co.uk)

## Flowfresh MF (4–6 mm)

A heavy duty, chemical resistant antimicrobial treated polyurethane resin floor finish. Flowfresh MF provides an attractive, smooth matt coloured finish and is best suited to zones subject to heavy duty wheeled traffic.

✓ DRY PROCESSING AREAS & CORRIDORS

### Standard Colours



Cream



Ochre



Red



Mustard



Mid Grey



Dark Green



Dark Blue



Dark Grey



#### FIRE RESISTANCE:

EN 13501-1

B<sub>FL</sub> - s1

#### SLIP RESISTANCE:

BS 7976-2

Dry > 40  
Low slip potential.

#### WEAR RESISTANCE:

EN 13892-5

Abrasion quantity < 1cm<sup>3</sup>



\*Flowfresh SL is available at 2mm with enhanced durability and anti-slip properties. Please contact your local Flowcrete representative for further information. A full technical profile is available at [www.flowcrete.co.uk](http://www.flowcrete.co.uk)



Flowcrete UK's materials contain Polygiene®, a silver ion antimicrobial additive designed to offer enhanced hygiene underfoot.



## Flowfresh SR (5–6 mm)

A slurry-broadcast and HACCP International certified antimicrobial treated polyurethane resin floor system. Flowfresh SR provides a positively textured and vibrantly, anti-slip coloured floor finish, which is resistant to thermal shock and moisture vapour transmission.

✓ DRY PROCESSING AREAS

### TEMPERATURE RESISTANCE:

Tolerant to intermittent spillages up to 120°C or sustained dry heat from -40°C to 105°C (at 9mm thickness).

### FIRE RESISTANCE:

EN 13501-1

B<sub>FL</sub> - s1

### SLIP RESISTANCE:

BS 7976-2

Dry > 40  
Low slip potential.

## Standard Colours



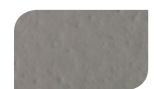
Dark Blue



Dark Green



Dark Grey



Mid Grey



Cream



Mustard



Ochre



Red



## Flowcoat SF41 (0.35 mm)

A high performance, solvent free, epoxy resin coating that can deliver an anti-slip profile by inclusion of graded aggregate between coats. Flowcoat SF41 is also hard wearing against sustained vehicle traffic, as well as chemical and abrasion resistant.

✓ STORAGE AREAS, LOADING AREAS AND WAREHOUSES

### IMPACT RESISTANCE:

EN ISO 6272	10 Nm
-------------	-------

### SLIP RESISTANCE:

BS 7976-2	Dry > 40 Low slip potential.
-----------	---------------------------------

### WEAR RESISTANCE:

EN 13892-5	Abrasion quantity < 1cm <sup>3</sup>
------------	--------------------------------------

## Standard Colours



Light Grey



Beige



Goosewing Grey



Tile Red



Mid Grey



Forest Green



Dark Grey



Traffic Blue







## Deckshield ID (2–3 mm)

A flexible, solvent free polyurethane deck coating system for intermediate decks of multi storey structures. Deckshield ID cosmetically enhances and reduces noise, making brighter and safer environments to work.

✓ WAREHOUSES & INTERNAL WALKWAYS

### FIRE RESISTANCE:

EN 13501-1

B<sub>fl</sub> – s1

### TEMPERATURE RESISTANCE:

Softens over 70° C, hardens on cooling.

### ABRASION RESISTANCE:

EN ISO 5470-1

weight loss < 3000 mg



\*Deckshield Rapide ID is available for fast track application  
Please contact your local Flowcrete representative for further  
information. A full technical profile is available at [www.flowcrete.co.uk](http://www.flowcrete.co.uk)

### Standard Colours



Forest Green



Mid Grey



Dark Grey



Tile Red



Traffic Purple



Traffic Blue

## Deckshield ED (3–4 mm)

A flexible polyurethane deck coating system designed to provide a colourful, watertight and hard-wearing surface for exposed or roof level decks.

✓ EXTERNAL WALKWAYS

### Standard Colours



Forest Green



Mid Grey



Dark Grey



Tile Red



Traffic Purple



Traffic Blue



### FIRE RESISTANCE:

EN 13501-1

B<sub>fl</sub> – s1

### TEMPERATURE RESISTANCE:

Softens over 70° C, hardens on cooling.

### ABRASION RESISTANCE:

EN ISO 5470-1

weight loss < 3000 mg



\*Deckshield Rapide ED is available for fast track application  
Please contact your local Flowcrete representative for further  
information. A full technical profile is available at [www.flowcrete.co.uk](http://www.flowcrete.co.uk)



## Mondéco Classic (9 mm)

A seamless, epoxy resin terrazzo floor finish incorporating marble chippings for a decorative, contemporary finish underfoot. Enduring high traffic levels, Mondéco Classic is suitable for areas where design and durability are key.

✓ FOYERS & ENTRANCES

### FIRE RESISTANCE:

EN 13501-1

B<sub>FL</sub>-s1

### SLIP RESISTANCE:

BS 7976-2

Dry >40  
Low slip potential.

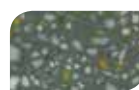
### TEMPERATURE RESISTANCE:

Tolerant of sustained temperatures up to 60°C.

## Standard Colours



Dawn –  
Oyster White



Dawn –  
Dusty Grey



Dawn –  
Agate Grey



Dawn –  
Provence Blue



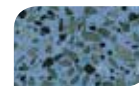
Dusk –  
Oyster White



Dusk –  
Dusty Grey



Dusk –  
Agate Grey



Dusk –  
Provence Blue







## Mondéco Mirrazzo (6–7 mm)

A seamless, hard-wearing, epoxy resin terrazzo floor finish comprising a blend of aggregates to deliver a contemporary aesthetic. Containing crushed clear, coloured and mirrored glass alongside metallic particles, Mondéco Mirrazzo creates a glamorous finish underfoot.

✓ FOYERS & ENTRANCES

### Standard Colours



Botticino



Sapphire



Nephrite



Sodalite



Pearl Grey



Bardiglio



Haematite



Black Diamond



#### FIRE RESISTANCE:

EN 13501-1

B<sub>FL</sub>-s1

#### SLIP RESISTANCE:

BS 7976-2

Dry >40  
Low slip potential.

#### TEMPERATURE RESISTANCE:

Tolerant of sustained temperatures up to 60°C.







## Flowfast Terrosso (4 mm)

A seamless, decorative and durable MMA resin floor finish that delivers visual impact alongside high performance, under a quick turnaround. Curing in as little as one hour after application, Flowfast Terrosso has been developed to enable fast track installation.

✓ FOYERS & ENTRANCES

### TEMPERATURE RESISTANCE:

Tolerant of sustained temperatures up to 50°C.

### SLIP RESISTANCE:

BS 7976-2

Dry >40  
Low slip potential.

### IMPACT RESISTANCE:

EN ISO 6272

10 Nm

## Standard Colours



Cream



Beige



Red



Blue



Light Grey



Signal Grey



Mid Grey



Dark Grey

\*Glitter and smaller flakes can be included with the resin

## Flowfast Quartz & Classic for Wet Areas (4 mm)

A durable, fast curing MMA resin floor toppings made from decorative quartz granules in a clear resin binder. Delivers a slip and chemical resistant finish suited to environments subject to heavy foot traffic and aggressive cleaning agents.

✓ LOCKER ROOMS & RESTROOMS

## Standard Industrial Colours



Red



Grey



Green



Cream



Blue



Yellow



### IMPACT RESISTANCE:

EN ISO 6272

10 Nm

### SLIP RESISTANCE:

BS 7976-2

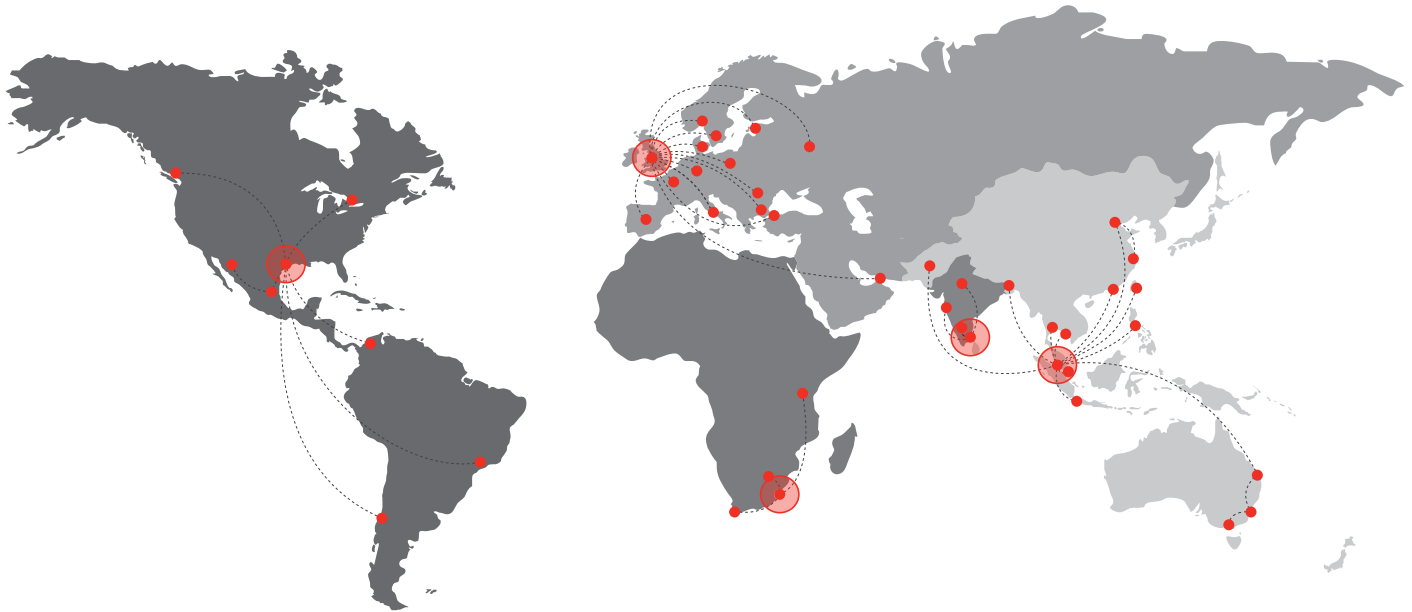
Dry > 40  
low slip potential.

### FIRE RESISTANCE:

EN 13501-1

B<sub>FL</sub> - s1





## Flowcrete

World leader in seamless resin flooring solutions and other specialist coatings.

## Europe & Middle East

Baltic States	+48 883 303 880	latvia@flowcrete.com
Bulgaria	+359 898 61 58 31	bulgaria@flowcrete.com
Denmark	+46 435 40 01 10	denmark@flowcrete.com
France	+33 1 60 61 74 42	france@flowcrete.com
Germany	+49 4187 50 29 470	germany@flowcrete.com
Italy	+39 339 4853258	italy@flowcrete.com
Norway	+47 6486 0830	norway@flowcrete.com
Poland	+48 22 879 8907	poland@flowcrete.com
Romania	+40 766 596 991	romania@flowcrete.com
Russia	+7 916 931 35 13	russia@flowcrete.com
Spain	+34 937 07 0872	spain@flowcrete.com
Sweden	+46 435 40 01 10	sweden@flowcrete.com
Turkey	+90 212 294 6567	turkey@flowcrete.com
UAE	+971 4 886 4728	uae@flowcrete.com
UK	+44 1942 251 400	flooringuk@cpgeurope.com

## Africa

East Africa	+254 20 682 1011	eastafrika@flowcrete.com
South Africa	+27 31 701 0017	southafrica@flowcrete.com

## India

India	+91 44 4017 6600	india@flowcrete.com
-------	------------------	---------------------

## Asia Pacific

Australia	+61 7 3205 7115	australia@flowcrete.com
Bangladesh	+88 02 985 7222	bangladesh@flowcrete.com
China	+86 10 8472 1912	china@flowcrete.com
Hong Kong	+852 2795 0478	hongkong@flowcrete.com
Indonesia	+62 21 252 3201	indonesia@flowcrete.com
Malaysia	+60 3 6277 9575	malaysia@flowcrete.com
Pakistan	+92 337 3159272	pakistan@flowcrete.com
Philippines	+63 2 834 6506	philippines@flowcrete.com
Singapore	+65 6848 7166	singapore@flowcrete.com
Taiwan	+886 916 954 291	taiwan@flowcrete.com
Thailand	+66 2539 3424	thailand@flowcrete.com
Vietnam	+84 28 6287 0846	vietnam@flowcrete.com

## Americas

Brazil	+55 11 3230 1107	brazil@flowcrete.com
Canada	+1 604 628 1782	canada@flowcrete.com
Chile	+56 2 2938 1962	chile@flowcrete.com
Colombia	+57 1 381 9254	colombia@flowcrete.com
Mexico	+01 800 099 0468	mexico@flowcrete.com
USA	+1 936 539 6700	usa@flowcrete.com

\*Whilst every care has been taken to ensure that the information included in this document was accurate at the time of printing, Flowcrete reserves the right to change product specifications at any time without prior notice. The photographs and colours reproduced in this publication are within the constraints of the printing process and are not to be used for matching purposes. All photographs are used for approximate representation only and may not show the actual products on offer. E&OE.